

TM 5-6675-306-24P

**TECHNICAL MANUAL**

**ORGANIZATIONAL, DIRECT SUPPORT AND**

**GENERAL SUPPORT MAINTENANCE**

**REPAIR PARTS AND SPECIAL TOOLS LIST**

**(INCLUDING DEPOT MAINTENANCE REPAIR PARTS AND SPECIAL TOOLS)**

**THEODOLITE, SURVEY, DIRECTIONAL, 1 SECOND**

**WILD HEERBRUGG INSTRUMENTS INC.**

**MODEL T2-74 DEGREE**

**NSN 6675-00-334-5335**

---

**HEADQUARTERS, DEPARTMENT OF THE ARMY**

**MAY 1975**

CHANGE

NO. 1

HEADQUARTERS  
DEPARTMENT OF THE ARMY  
WASHINGTON, D.C., 3 JULY 1992

Organizational, Direct Support and General Support Maintenance  
Repair Parts and Special Tools List  
(including Depot Maintenance Repair Parts  
and Special Tools List)

**THEODOLITE, SURVEY, DIRECTIONAL, 1 SECOND  
WILD HEERBRUGG INSTRUMENTS INC.  
MODEL T2-74 DEGREE  
NSN 6675-00-334-5335**

Approved for public release; Distribution is unlimited

TM 5-6675-306-24P, 9 May 1975 is changed as follows:

1. Remove and insert pages as indicated below. New or changed text material is indicated by a vertical bar in the margin. An illustration change is indicated by a miniature pointing hand.

Remove pages

2-5 through 2-8  
2-23 and 2-24

Insert pages

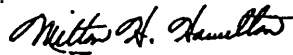
2-5 through 2-8  
2-23 and 2-24

2. Retain this sheet in front of manual for reference purposes.

**By Order of the Secretary of the Army:**

GORDON R. SULLIVAN  
*General, United States Army*  
*Chief of Staff*

Official:



MILTON H. HAMILTON  
*Administrative Assistant to the*  
*Secretary of the Army*

01844

**DISTRIBUTION:**

To be distributed in accordance with DA Form 12-25E, (qty rqr block no. 1844).

TECHNICAL MANUAL  
 No. 5-6675-306-24P

**HEADQUARTERS  
 DEPARTMENT OF THE ARMY  
 WASHINGTON, D. C., 9 May 1975**

ORGANIZATIONAL, DIRECT SUPPORT AND  
 GENERAL SUPPORT MAINTENANCE  
 REPAIR PARTS AND SPECIAL TOOLS LIST  
 (INCLUDING DEPOT MAINTENANCE REPAIR PARTS AND SPECIAL TOOLS)

**THEODLITE, SURVEY, DIRECTIONAL, 1 SECOND**

**WILD HEERBRUGG INSTRUMENTS INC.**

**MODEL T2-74 DEGREE**

**NSN 6675-00-334-5335**

**Current as of 9 April 1975**

	Page	Illus Figure
Section I. Introduction	1-1	
II. Repair Parts List	2-4	
Group 01. Shipping Case, Haversack, Carrying Case and Base	2-1	
Shipping Case and Haversack		1
Metal Carrying Case		2
Base		3
02. Tribrach, Assembly	2-1	
Base Plate		4
Footscrew		5
Locking Plate		6
Optical Plummet Eyepiece and Objective, and Mounting Flange		7
Base and Axis	2-4	
03. Base Cover		8
Base Housing, Illumination Flange and Contact Ring		9
Horizontal Circle Drive		10
Horizontal Clamp		11
Vertical Axis and Horizontal Circle Drives		12
04. U-Standard	2-7	
U-Standard		13
Plate Level		14
Connecting Flange		15
05. Telescope Axis, Vertical Clamp, Reticle Illumination Assembly, Collimation Assembly, Vertical Circle Objectives, and Vertical Collimation Level	2-10	
Telescope Axis, Vertical Clamp, Reticle Illumination, Collimation Assembly and Vertical Circle Objectives		16
Vertical Collimation Lever		17
06. Adjusting Prism and Optical Micrometer	2-14	
Adjusting Prism		18
Optical Micrometer		19
07. Telescope Objective and Telescope Eyepiece Tube	2-15	
Telescope Objective		20
Telescope Eyepiece Tube		21

TM 5-6675-306-24P

	Page	Illus. Figure
Group 08. Reading Microscope and Illumination Mirror	2-17	
Reading Microscope		22
Illumination Mirror		23
09. Horizontal, Vertical, Collimation Slow Motion Screws	2-18	
Horizontal Slow Motion Screw		24
Vertical Slow Motion Screw		25
Collimation Slow Motion Screw		26
10. Handlamp Connecting Cable and Battery Box	2-19	
Handlamp and Connecting Cable		27
Battery Box		28
11. Accessory Case, Filled	2-21	
Accessory Case, Filled		29
Electric Lamp Fitting		30
Diagonal Telescope Eyepiece		31
Diagonal Microscope Eyepiece		32
12. Tripod, GST20-1	2-24	
Tripod		33
Tripod Accessory Case		34
Plumb Bob		35
SECTION III. Special Tools List	3-1	
IV. National Stock Number and Part Number Index	4-1	

# SECTION I

## INTRODUCTION

### 1. Scope

**This manual lists repair parts, special tools, test, measurement, and diagnostic equipment (TMDE), and other support equipment required for operation and performance of organizational, direct support, and general support maintenance of the theodolite.**

#### 2. General

*a. Section II, Repair Parts List.* A list of repair parts authorized for use in the performance of maintenance. The list also includes parts which must be removed for replacement of the authorized parts. Parts lists are composed of functional groups in ascending numerical sequence, with the parts in each group listed in figure and item number sequence. Bulk materials are listed in NSN sequence, as the last group in Section II.

*b. Section III, Special Tools List.* A list of special tools, TMDE, and support equipment authorized for the performance of maintenance, at the organizational level.

*c. Section IV, National Stock Number and Part Number Index.* A list, in ascending numerical sequence, of all National stock numbers appearing in the listings, followed by a list, in alphanumeric sequence, of all part numbers appearing in the listings. National stock number and part numbers are cross-referenced to each illustration figure and item number appearance.

#### 3. Explanation of Columns

The following provides an explanation of columns found in the tabular listings:

*a. Illustration.* This column is divided as follows:

(1) *Figure number.* Indicates the figure number of the illustration in which the item is shown.

(2) *Item number.* The number used to identify each item called out in the illustration.

*b. Source, Maintenance, and Recoverability Codes (SMR).*

(1) *Source code.* Source codes are assigned to support items to indicate the manner of acquiring support items for maintenance, repair, or overhaul of end items. Source codes are entered in the first and second positions of the Uniform SMR Code format as follows:

Code	<i>Definition</i>
PA	Item procured and stocked for anticipated or known usage
PB	Item procured and stocked for insurance purpose because essentiality dictates that a minimum quantity be available in the supply systems
PC	Item procured and stocked and which otherwise would be coded PA except that it is deteriorative in nature
PD	Support item, excluding support equipment, procured for initial issue or outfitting and stocked only for subsequent or additional initial issues or outfittings Not subject to automatic replenishment
PE	Support equipment procured and stocked for initial issue or outfitting to specified maintenance repair activities
PF	Support equipment which will not be stocked but which will be centrally procured on demand
PG	Item procured and stocked to provide for sustained support for the life of the equipment It is applied to an item peculiar to the equipment which, because of probable discontinuance or shutdown of production facilities, would prove uneconomical to reproduce at a later time
KD	An item of a depot overhaul/repair kit and not purchased separately Depot kit defined as a kit that provides items required at the time of overhaul or repair
KF	An item of a maintenance kit and not purchased separately Maintenance kit defined as a kit that provides an item that can be replaced at organizational or intermediate levels of maintenance
KB	Item included in both a depot overhaul/repair kit and a maintenance kit
MO	Item to be manufactured or fabricated at organizational level
MF	Item to be manufactured or fabricated at the direct support maintenance level
MH	Item to be manufactured or fabricated at the general support maintenance level
MD	Item to be manufactured or fabricated at the depot maintenance level
AO	Item to be assembled at organizational level
AF	Item to be assembled at direct support maintenance level
AH	Item to be assembled at general support maintenance level
AD	Item to be assembled at depot maintenance level
XA	Item is not procured or stocked because the requirements for the item will result in the replacement of the next higher assembly
XB	Item is not procured or stocked if not available through salvage, requisition

Code	Definition
XA	Support item that is not stocked. When required item will be procured through normal supply channels

**NOTE**

Cannibalization or salvage may be used as a source of supply for any items source coded above except those coded XA or XD

(2) **Maintenance code.** Maintenance codes are assigned to indicate the levels of maintenance authorized to use and repair support items. The maintenance codes are entered in the third and fourth positions of the Uniform SMR Code format as follows:

(a) The maintenance code entered in the third position will indicate the lowest maintenance level authorized to remove, replace, and use the support item. The maintenance code entered in the third position will indicate one of the following levels of maintenance

Code	Application Explanation
C	Crew or operator maintenance performed within organizational maintenance
O	Support item is removed, replaced, used at the organizational level
I	Support item is removed, replaced, used by the direct support element of integrated direct support maintenance
F	Support item is removed, replaced, used at the direct support level
H	Support item is removed replaced, used at the general support level
D	Support items that are removed, replaced, used at depot mobile depot, specialized repair activity only

**NOTE**

Codes I and F will be considered the same by direct support units

(b) The maintenance code entered in the fourth position indicates whether the item is to be repaired and identifies the lowest maintenance level with the capability to perform complete repair (ie, all authorized maintenance functions) This position will contain one of the following maintenance codes

Code	Application/Explanation
O	The lowest maintenance level capable of complete repair of the support item is the organizational level
F	The lowest maintenance level capable of complete repair of the support item is the direct support level
H	The lowest maintenance level capable of complete repair of the support item is the general support level
D	The lowest maintenance level capable of complete repair of the support item is the depot level
L	Repair restricted to designated specialized repair activity

Code	Application/Explanation
Z	Nonreparable No repair is authorized.
B	No repair is authorized. The item may be reconditioned by adjusting, lubricating, etc., at the user level. No parts or special tools are procured for the maintenance of this item.

(3) **Recoverability code.** Recoverability codes are assigned to support items to indicate the disposition action on unserviceable items. The recoverability code is entered in the fifth position of the Uniform SMR Code format as follows:

Recoverability Codes	Definition
Z	Nonreparable item. When unserviceable, condemn and dispose at the level indicated in position 3.
O	Reparable Item When uneconomically repairable, condemn and dispose at organizational level
F	Reparable item. When uneconomically repairable, condemn and dispose at the direct support level.
H	Reparable Item When uneconomically repairable, condemn and dispose at the general support level
I)	Reparable item When beyond lower level repair capability, return to depot Condemnation and disposal not authorized below depot level
L	Reparable item Repair, condemnation, and disposal not authorized below depot/specialized repair activity level
A	Item requires special handling or condemnation procedures because of specific reasons (ie, precious metal content, high dollar value, critical material or hazardous material) Refer to appropriate manuals/directives for specific instructions

**c National Stock Number** Indicates the National stock number assigned to the item and will be used for requisitioning purposes.

**d Part Number.** Indicates the primary number used by the manufacturer which controls the design and characteristics of the item by means of its engineering drawings, specifications standards, and inspection requirements to identify an item or range of items

**NOTE**

When a stock numbered item is requisitioned, the repair part received may have a different part number than the part being replaced

**e Federal Supply Code for Manufacturer (FSCM).** The FSCM is a 5-digit numeric code listed in SB 708-42 which is used to identify the manufacturer, distributor, or Government agency, etc.

**f Description** Indicates the Federal item name and, if required, a minimum description to identify the item. Items that are included in kits and sets are listed below the name of the kit or set with the quantity of each item in the kit or set indicated in the quantity incorporated in unit column. When the part to be used differs between serial numbers

of the same model, the effective serial numbers are shown as the last line of the description In the Special Tools List, the initial basis of issue (BOI) appears as the last line in the entry for each special tool, TMDE, and support equipment. When density of equipments supported exceeds density spread indicated in the basis of issue, the total authorization is increased accordingly

**g. Unit of Measure (U/M).** Indicates the standard of the basic quantity of the listed item as used in performing the actual maintenance function This measure is expressed by a two-character alphabetical abbreviation (e.g., ea, in, pr, etc) When the unit of measure differs from the unit of issue, the lowest unit of issue that will satisfy the required units of measure will be requisitioned

**h Quantity Incorporated in Unit** Indicates the quantity of the item used in the breakout shown on the illustration figure, which is prepared for a functional group, subfunctional group, or an assembly A "V" appearing in this column in lieu of a quantity indicates that no specific quantity is applicable, (e.g. shims, spacers, etc.)

#### 4. Special Information

**a** Detailed manufacturing instructions for items source coded to be manufactured or fabricated are found in TM 5-6675-306-14. Bulk materials required to manufacture items are listed in the Bulk Material Group of this manual

**b** Detailed assembly instructions for items source coded to be assembled are found in TM 5-6675-306-14 Assembly components are listed immediately following the item to be assembled.

**c** Repair parts kits and gasket sets appear as the last entries in the repair parts listing for the figure in which its parts are listed as repair parts or are listed at the end of the repair parts listing for the last figure containing parts of the kit

#### 5. How To Locate Repair Parts

##### **a When National Stock Number or Part Number is Unknown**

(1) **First.** Using the table of contents, determine the functional group within which the repair Part belongs This is necessary since

illustrations are prepared for functional groups, and listings are divided into the same groups

(2) **Second.** Find the illustration covering the functional group to which the repair part belongs

(3) **Third.** Identify the repair part on the illustration and note the illustration figure and item number of the repair part.

(4) **Fourth.** Using the Repair Parts Listing, find the figure and item number noted on the illustration.

##### **b When National Stock Number or Part Number is Known**

(1) **First.** Using the Index of National Stock Numbers and Part Numbers, find the pertinent National stock number or part number This index is in ascending NSN sequence followed by a list of part numbers in ascending alphanumeric sequence, cross-referenced to the illustration figure number and item number

(2) **Second.** After finding the figure and item number, locate the figure and item number in the repair parts list.

#### 6. Abbreviations

ASSY	ASSEMBLY
CM	CFNTIMETER
DEG	DEGREE
M	METER
MTG	MOUNTING
OPT	OPTICAL
TEL	TELESCOPE
V	VOLTS

#### 7. Reporting of Errors

You can help improve this manual by calling attention to errors and by recommending improvements Your letter, DA Form 2028 (Recommended Changes to Publications) and/or DA Form 2028-2 (Recommended Changes to Equipment Technical Manuals), may be used. Copies of DA Form 2028-2 art attached in the back of the manual for your use **Please mail your recommended changes directly to Commander, U S Army Troop Support Command, ATTN AMSTS-MPP, 4300 Goodfellow Blvd , St Louis, MO 63120 A reply will be furnished directly to you**

Section II. REPAIR PARTS LIST

(1) ILLUSTRATION		(2)	(3)	(4)	(5)	(6)	(7)	(8)
(a) FIG NO.	(b) ITEM NO.	SMR CODE	NATIONAL STOCK NUMBER	PART NUMBER	FSCN	DESCRIPTION  Usable On Code	U/M	QTY INC IN UNIT
						GROUP 01 - SHIPPING CASE, HAVERSACK CARRYING CASE AND BASE		
		XBOOZ		316119	89905	CASE ASSY, METAL, CARRYING (FIG. 2, ITEMS 1 THROUGH 6 AND FIG. 3, ITEMS 1 THROUGH 9)	EA	1
		XBOOZ		316055	89905	HOOD ASSY, METAL (FIG. 2, ITEMS 1 THROUGH 6)	EA	1
		XBOZZ		158656-74	89905	BASE ASSY (FIG. 3, ITEMS 1 THROUGH 9)	EA	1
1	1	XBOOZ		316110	89905	CASE, SHIPPING	EA	1
1	2	XBOZZ		202573	89905	HAVERSACK	EA	1
2	1	XBOOZ		109274	89905	STRAP, LEATHER	EA	1
2	2	XAOZZ		323110	89905	HOOD, METAL	EA	1
2	3	XBOZZ		135797	89905	PIN, LOCK	EA	4
2	4	XBOZZ		135796	89905	SPRING, LOCK	EA	2
2	5	XBOZZ		135794	89905	LEVER, LOCK	EA	2
2	6	XBOZZ		197872	89905	RIVET	EA	4
3	1	XBOZZ		161977	89905	SCREW	EA	3
3	2	XBOZZ		162477	89905	SCREW	EA	6
3	3	XAOZZ		316059	89905	BASE, COMPOSED OF ITEMS 3 AND 3A WHICH CANNOT BE ORDERED SEPARATELY	EA	1
3	4	XBOZZ		109277	89905	GASKET, RUBBER	EA	1
3	5	XBOZZ		316083	89905	CONTAINER, DESSICANT	EA	1
3	6	XBOZZ		109279	89905	LEVER	EA	3
3	7	XBOZZ		176466	89905	WASHER, SPRING	EA	3
3	8	XBOZZ		109142	89905	WASHER	EA	3
3	9	XBOZZ		109251	89905	NUT	EA	3
						GROUP 02 - TRIBRACH ASSY		
		XBFDD		3147519	89905	TRIBRACH ASSY (FIG. 4, ITEMS 1 THROUGH 9, FIG. 5, ITEMS 1 THROUGH 10, FIG. 6, ITEMS 1 THROUGH 17, AND FIG. 7, ITEMS 1 THROUGH 26)	EA	1
		XBDZZ		314514	89905	PLATE ASSY, BASE (FIG. 4, ITEMS 1 THROUGH 5, 7 THROUGH 9 AND FIG. 5, ITEMS 2 AND 5 THROUGH 9)	EA	1
		XBDZZ		314513	89905	PLATE ASSY, SPRING (FIG. 4, ITEMS 1 THROUGH 4)	EA	1
		XBFZZ		314515	89905	FOOTSCREW ASSY (FIG. 5, ITEMS 2 AND 5 THROUGH 9)	EA	3



(1) ILLUSTRATION		(2)	(3)	(4)	(5)	(6)	(7)	(8)
(a) FIG. NO.	(b) ITEM NO.	SHR CODE	NATIONAL STOCK NUMBER	PART NUMBER	FSCN	DESCRIPTION  Usable On Code	U/M	QTY INC IN UNIT
		XBFZZ		314526	89905	SCREW, LEVELING (FIG. 5, ITEMS 5 AND 9)	EA	1
		XBFZZ		202683	89905	PLATE ASSY, LOCKING (FIG. 6, ITEMS 4, 5, 15 AND 16)	EA	1
		XBFZZ		314517	89905	LOCK KNOB ASSY (FIG. 6, ITEMS 6 THROUGH 8 AND 10 THROUGH 14)	EA	1
		XBDDZ		3316114	89905	OBJECTIVE ASSY, OPT PLUMMET (FIG. 7, ITEMS 1 AND 2)	EA	1
		XBDZZ		314512	89905	FLANGE, MOUNTING (FIG. 7, ITEMS 3 AND 4)	EA	1
		XBDZZ		314511	89905	EYEPIECE ASSY, OPTICAL PLUMMET (FIG. 7, ITEMS 12 THROUGH 16 AND 18 THROUGH 20)	EA	1
		XADZZ		214254	89905	EYEPIECE (FIG. 7, ITEMS 14 THROUGH 16)	EA	1
4	1	XBDZZ		163809	89905	SETSCREW	EA	1
4	2	XBDZZ		312964	89905	NUT, CENTER	EA	1
4	3	XBDZZ		314522	89905	PLATE, SPRING	EA	1
4	4	XBDZZ		135901	89905	NUT, LOCK	EA	1
4	5	XBDZZ		335524	89905	PLATE, BASE	EA	1
4	6	XBDZZ		162567	89905	SCREW	EA	1
4	7	XBFZZ		356048	89905	RING, LOCK	EA	1
4	8	XBDZZ		130378	89905	NUT, LOCK	EA	3
4	9	XBFZZ		130373	89905	SCREW	EA	3
5	1	XBFZZ		135960	89905	COVER, DUST	EA	3
5	2	XBFZZ		161975	89905	SCREW, STOP	EA	1
5	3	XBDZZ		314527	89905	CASTING, BASE	EA	1
5	4	XBFZZ		162254	89905	SCREW, ADJUSTING	EA	3
5	5	XBFZZ		311133	89905	NUT, ADJUSTABLE	EA	1
5	6	XBFZZ		129831	89905	KNOB, MILLED	EA	1
5	7	XBFZZ		215823	89905	WASHER	EA	1
5	8	XBFZZ		215824	89905	WASHER	EA	1
5	9	XBFZZ		215825	89905	SCREW, MACHINE	EA	1
5	10	XBFZZ		163856	89905	SETSCREW	EA	3
6	1	XBFZZ		335104	89905	VIAL, LEVEL, CIRCULAR	EA	1
6	2	XBFZZ		135959	89905	WASHER, SPRING	EA	1
6	3	XBFZZ		162681	89905	SCREW, MACHINE	EA	3
6	4	XAFZZ		153333	89905	PLATE, LOCK	EA	1

(1) ILLUSTRATION		(2)	(3)	(4)	(5)	(6)	(7)	(8)
Comp FIG. NO.	Item NO.	SMR CODE	NATIONAL STOCK NUMBER	PART NUMBER	FSCN	DESCRIPTION  Usable Cm Code	U/M	QTY INC IN UNIT
6	5	XAFZZ		1153317	89905	STOP	EA	1
6	6	XBFZZ		1161720	89905	SCREW, MACHINE	EA	1
6	7	XAFZZ		2278150	89905	CHUCK, CLAMP	EA	1
6	8	XAFZZ		1153319	89905	LEVER, LOCKING	EA	1
6	9	XBFZZ		1170908	89905	SCREW, LOCK KNOB ASSY, MTG	EA	2
6	10	XBFZZ		2252888	89905	NUT	EA	1
6	11	XBFZZ		1161034	89905	SCREW, MACHINE	EA	1
6	12	XBFZZ		1162437	89905	PIN	EA	1
6	13	XBFZZ		1149679	89905	KNOB, LOCK	EA	1
6	14	XAFZZ		314529	89905	BEARING	EA	1
6	15	XBFZZ		1161784	89905	SCREW, MACHINE	EA	1
6	16	XBFZZ		2234075	89905	SPRING	EA	1
6	17	XBFZZ		1171274	89905	SCREW, MACHINE	EA	1
7	1	XADZZ		1136119	89905	LENS	EA	1
7	2	XADZZ		1109255	89905	HOUSING, OBJECTIVE	EA	1
7	3	XADZZ		162368	89905	SCREW, ADJUSTING	EA	2
7	4	XADZZ		314521	89905	FLANGE	EA	.
7	5	XBDZZ		1162092	89905	SCREW	EA	2
7	6	XBDZZ		1107304	89905	SLEEVE, RETICLE	EA	1
7	7	XBDZZ		1107305	89905	HOUSING, RETICLE	EA	1
7	8	XBDZZ		1114571	89905	RETICLE, OPTICAL PLUMMET	EA	1
7	9	XBDZZ		1170554	89905	SETSCREW	EA	1
7	10	XBDZZ		1136144	89905	SPRING	EA	1
7	11	XBDZZ		1136146	89905	HOUSING, SPRING	EA	1
7	12	XBDZZ		163790	89905	SETSCREW	EA	3
7	13	XADZZ		171924	89905	COLLAR, MILLED	EA	1
7	14	XADZZ		214203	89905	LOCKNUT	EA	1
7	15	XADZ*		1136046	89905	LENS	EA	1
7	16	XADZZ		214260	89905	COLLAR, STOP	EA	1
7	17	XBDZZ		162882	89905	SCREW, MACHINE	EA	4
7	18	XADZZ		314520	89905	MOUNT, EYEPIECE	EA	1
7	19	XADZZ		136145	89905	LOCKNUT	EA	1

(1) ILLUSTRATION		(2)	(3)	(4)	(5)	(6)	(7)	(8)
(a) FIG. NO.	(b) ITEM NO.	SNR CODE	NATIONAL STOCK NUMBER	PART NUMBER	FSCM	DESCRIPTION  Usable On Code	U/M	QTY INC IN UNIT
7	20	XBDZZ		162368	89905	SCREW, ADJUSTING	EA	1
7	21	XBDZZ		162913	89905	SCREW, MACHINE	EA	3
7	22	XBDZZ		175232	89905	SCREW, MACHINE	EA	1
7	23	XBDZZ		314528	89905	HOUSING, PRISM	EA	1
7	24	XBDZZ		163660	89905	SETSCREW	EA	1
7	25	XBDZZ		107300	89905	PRISM	EA	1
7	26	XBDZZ		163807	89905	SETSCREW	EA	1
		XBDZZ		360491-74	89905	GROUP 03 - BASE AND AXIS BASE AND AXIS ASSY (FIG. 8, ITEMS 1, 2, 5 THROUGH 13, 15, FIG. 9, ITEMS 1 THROUGH 34, FIG. 10, ITEMS 1 THROUGH 9, FIG. 11, ITEMS 1 THROUGH 10, FIG. 12, ITEMS 1 THROUGH 4, 9, 10, 12 THROUGH 14, AND 16)	EA	1
		XBDZZ		360482	89905	BASE ASSY (FIG. 8, ITEMS 1, 2, 5 THROUGH 13, AND 15)	EA	1
		XBDZZ		360483	89905	COVER ASSY, BASE (FIG. 8, ITEMS 1, 2, 5 AND 15)	EA	1
		XBDZZ		242660	89905	RING ASSY, CONTACT (FIG. 9, ITEMS 1, 18, 19 AND 25)	EA	1
		XBDZZ		360479	89905	HOUSING ASSY, BASE (FIG. 9, ITEMS 5, 8, 13 THROUGH 15, 17, 20 THROUGH 24, AND 26 THROUGH 34)	EA	1
		XBDZZ		195994	89905	CONNECTOR ASSEMBLY (FIG. 9, ITEMS 17 AND 26)	EA	1
		XBFZZ		360484	89905	FLANGE ASSY, ILLUMINATION (FIG. 9, ITEMS 6, 10 THROUGH 12 AND 16)	EA	1
		XBDZZ		242650	89905	DRIVE ASSY, CIRCLE (FIG. 10, ITEMS 1 THROUGH 5 AND 7 THROUGH 9)	EA	1
		XBDZZ		360480	89905	CLAMP ASSY, HORIZONTAL (FIG. 11, ITEMS 2, 4, 6 AND 8 THROUGH 10)	EA	1
		XBDZZ		242658-74	89905	AXIS ASSY, VERTICAL (FIG. 12, ITEMS 1 THROUGH 3, 9, 10, 12, 14, 16, 17 AND 23)	EA	1
		XBDZZ		323317	89905	AXIS ASSY (FIG. 12, ITEMS 10, 12, 14 AND 17)	EA	1
		XBDZZ		242588	89905	OBJECTIVE ASSY II, HORIZONTAL CIRCLE (FIG. 12, ITEMS 5 AND 6)	EA	1
		XBDZZ		242589	89905	OBJECTIVE ASSY I, HORIZONTAL CIRCLE (FIG. 12, ITEMS 7 AND 8)	EA	1
8	1	XBDZZ		314580	89905	COVER, BASE	EA	1
8	2	XBDZZ		169617	89905	NUT, LOCK	EA	3

(1) ILLUSTRATION		(2)	(3)	PART NUMBER	(5)	(6)	(7)	(8)	
(a) FIG NO	(b) ITEM NO	SMR CODE	NATIONAL STOCK NUMBER		FSCM	DESCRIPTION	USABLE ON CODE	U/M	QTY INC IN UNIT
8	3	XBDZZ		316038	89905	BLOCK, ORIENTATION		EA	1
8	4	XBDZZ		176732	89905	SCREW		EA	2
8	5	XBDZZ		107310	89905	FOOT CLUTCH		EA	3
8	6	XBDZZ		271975	89905	PRISM, YELLOW, ILLUMINATION		EA	1
8	7	XBDZZ		161863	89905	SCREW		EA	2
8	8	XBDZZ		314579	89905	COVER, PRISM		EA	1
8	9	XBDZZ		162667	89905	SCREW		EA	3
8	10	XBDZZ		163654	89905	SETSCREW		EA	1
8	11	XBDZZ		175232	89905	SCREW		EA	1
8	12	XBDZZ		314578	89905	HOUSING, PRISM		EA	1
8	13	XBDZZ		215973	89905	LENS, ILLUMINATION		EA	1
8	14	XBDZZ		170905	89905	SCREW		EA	6
8	15	XBDZZ		163833	89905	SETSCREW		EA	6
9	1	XADZZ		129244	89905	RING, CONTACT		EA	1
9	2	XBDZZ		170550	89905	SETSCREW		EA	1
9	3	XBDZZ		316027	89905	CLAMP, LOCKING		EA	1
9	4	XDDZZ		163786	89905	SETSCREW		EA	2
9	5	XBFZZ		163807	89905	SETSCREW		EA	1
9	6	XAFZZ		314581	89905	SOCKET, ILLUMINATION, SLEEVE		EA	1
9	7	XBDZZ		236263	89905	SCREW, MACHINE		EA	2
9	8	XBDZZ		136170	89905	NUT		EA	1
9	9	XBDZZ		163606	89905	NUT		EA	1
9	10	XAFZZ		136156	89905	CONTACT ASSY		EA	1
9	11	XAFZZ		107319	89905	SOCKET, ILLUMINATION, BUSHING		EA	1
9	12	XAFZZ		122701	89905	SPRING		EA	1
9	13	XBDZZ		107322	89905	PLUG		EA	1
9	14	XBDZZ		162584	89905	SCREW, MACHINE		EA	1
9	15	XBDZZ		107320	89905	CONTACT, ILLUMINATION, HORIZONTAL		EA	1
9	16	XAFZZ		163812	89905	SETSCREW		EA	1
9	17	XBDZZ		166265	89905	CABLE, ELECTRIC, 4 5 CM		FT	1
9	18	XADZZ		166265	89905	CABLE, ELECTRIC, 5 2 CM		FT	1
9	19	XADZZ		194609	89905	TUBE, INSULATION, 1 1 CM		FT	1

ILLUSTRATION			NATIONAL STOCK NUMBER	PART NUMBER	FSCM	DESCRIPTION	USABLE ON CODE	U/M	QTY INC IN UNIT
( a ) NO	( b ) NO	SMR CODE							
9	20	XBDZZ		107326	89905	CONTACTASSY		EA	1
9	21	XBDZZ		107327	89905	INSULATION		EA	1
9	22	XBDZZ		107328	89905	SLEEVE, INSULATION		EA	1
9	23	XBDZZ		162474	89905	SCREW		EA	1
9	24	XBDZZ		107323	89905	INSULATION		EA	1
9	25	XADZZ		202718	89905	CLIP, CABLE		EA	1
9	26	XBDZZ		202718	89905	CLIP, CABLE		EA	1
9	27	XBFZZ		163805	89905	SETSCREW		EA	1
9	28	XDDZZ		163786	89905	SETSCREW		EA	1
9	29	XBDZZ		107329	89905	SPRING, COMPRESSION, HELICAL		EA	1
9	30	XBDZZ		107317	89905	AXIS, DRIVE, CIRCLE		EA	1
9	31	XBFZZ		170252	89905	PIN		EA	1
9	32	XBDZZ		314575	89905	COVER, DRIVE, CIRCLE		EA	1
9	33	XBFZZ		170844	89905	SCREW		EA	1
9	34	XBDZZ		314574	89905	HOUSING, BASE		EA	1
10	1	XBDZZ		107333	89905	DRIVE		EA	1
10	2	XBDZZ		107331	89905	WASHER		EA	1
10	3	XBDZZ		107338	89905	WASHER, TEFLON		EA	2
10	4	XBDZZ		107337	89905	WASHER, SPRING		EA	1
10	5	XBDZZ		107330	89905	SLEEVE, BEARING		EA	1
10	6	XBDZZ		162584	89905	SCREW		EA	3
10	7	XBDZZ		107335	89905	KNOB		EA	1
10	8	XBFZZ		136061	89905	LOCKSCREW		EA	1
10	9	XBFZZ		163654	89905	SETSCREW		EA	1
11	1	XBDZZ		177733	89905	SCREW		EA	1
11	2	XBDZZ		136063	89905	KNOB, CLAMP		EA	1
11	3	XBDZZ		129969	89905	PIN		EA	1
11	4	XADZZ		314576	89905	CLAMP ASSY		EA	1
11	5	XBDZZ		129968	89905	JAW		EA	1
11	6	XBDZZ		162043	89905	SCREW		EA	2
11	7	XBDZZ		163807	89905	SETSCREW		EA	1
11	8	XBDZZ		170142	89905	PIN		EA	1

(1) ILLUSTRATION		(2)	(3)	(4)	(5)	(6)	(7)	(8)
(a) FIG. NO.	(b) ITEM NO.	SMR CODE	NATIONAL STOCK NUMBER	PART NUMBER	FSCH	DESCRIPTION  Usable On Code	U/M	QTY INC IN UNIT
11	9	XBDZZ		314577	89905	LEVER	EA	1
11	10	XBDZZ		163807	89905	SETSCREW	EA	1
12	1	XBDZZ		107362	89905	BUSHING	EA	1
12	2	XBDZZ		136067	89905	WASHER, PLATE	EA	2
12	3	XBDZZ		176407	89905	SCREW	EA	2
12	4	XBDZZ		175881	89905	SCREW	EA	4
12	5	XADZZ		136151	89905	MOUNT, LENS	EA	1
12	6	XADZZ		129964	89905	LENS, OBJECTIVE	EA	1
12	7	XADZZ		136150	89905	MOUNT, LENS	EA	1
12	8	XADZZ		129961	89905	LENS, OBJECTIVE	EA	1
12	9	XBDZZ		129957	89905	NUT, STOP	EA	1
12	10	XADZZ		129247	89905	AXIS, VERTICAL	EA	1
12	11	XBDZZ		166993	89905	BEARING, BALL	EA	25
12	12	XADZZ		129995	89905	BEARING, SHELL	EA	1
12	13	XBDZZ		107361	89905	WASHER, SPRING	EA	1
12	14	XADZZ		319095	89905	SLEEVE, CIRCLE	EA	1
12	15	XBDZZ		329591	89905	SCREW	EA	1
12	16	XBDZZ		163816	89905	SETSCREW	EA	8
12	17	XADZZ		129249	89905	CARRIER, PRISM	EA	1
12	18	XBDZZ		358200	89905	PLATE	EA	4
12	19	XBDZZ		332337	89905	PRISM, READING, COMPOSED OF ITEMS 19 AND 19A WHICH CANNOT BE ORDERED SEPARATELY	EA	2
12	20	XBDZZ		170545	89905	SETSCREW	EA	2
12	21	XBDZZ		175232	89905	SETSCREW	EA	2
12	22	XBDZZ		305166	89905	CIRCLE, HORIZONTAL	EA	1
12	23	XBDZZ		171407	89905	SCREW	EA	1
						GROUP 04 - U-STANDARD		
		XBDDZ		360492-74	89905	U-STANDARD ASSY	EA	1
		XBDZZ		360470	89905	U-STANDARD	EA	1
		XBDDZ		242666	89905	PRISM ASSY, SWITCHOVER FIG.13, ITEMS 9 THROUGH 17, 20, 21, 24 THROUGH 26)	EA	1
		XBDZZ		322595	89905	PRISM ASSY (FIG. 13, ITEM 32 THROUGH 36)	EA	1

(1) ILLUSTRATION		(2)	(3)	(4)	(5)	(6) DESCRIPTION	(7)	(8)
(a) NO	(b) NO	SMR CODE	NATIONAL STOCK NUMBER	PART NUMBER	FSCM	USABLE ON CODE	U/M	QTY INC UNIT
		XBDZZ		360474	89905	LEVEL ASSY, PLATE (FIG 14, ITEMS 2, 3 AND 10 THROUGH 14)	EA	1
		PADZZ	6675-00-378-9352	360471	89905	LEVEL ASSY, TUBULAR (FIG 14, ITEMS 11 AND 12)	EA	1
		XBDDZ		360487	89905	FLANGE ASSY, CONNECTING (FIG 15, ITEMS 1 THROUGH 14)	EA	1
		XBDZZ		242689	89905	SPRING ASSY, CONTACT (FIG 15, ITEMS 2, 6, 8 AND 11)	EA	1
13	1	XBDZZ		329367	89905	PLATE, COVER	EA	2
13	2	XBDZZ		162112	89905	SCREW	EA	3
13	3	XBDZZ		212178	89905	KNOB	EA	2
13	4	XBDZZ		170559	89905	SCREW	EA	6
13	5	XBDZZ		212177	89905	KNOB	EA	2
13	6	XBDZZ		288583	89905	PIN	EA	2
13	7	XBDZZ		129050	89905	AXIS	EA	1
13	8	XBDZZ		129065	89905	SLEEVE	EA	1
13	9	XADZZ		129047	89905	HOUSING, PRISM	EA	1
13	10	XADZZ		130089	89905	PIATE, LEFT	EA	1
13	11	XADZZ		130100	89905	PIN, SWITCHOVER	EA	1
13	12	XBDZZ		162576	89905	SCREW	EA	4
13	13	XADZZ		305119	89905	WIRE	EA	1
13	14	XBDZZ		129045	89905	PRISM, SWITCHOVER	EA	1
13	15	XADZZ		130097	89905	PIN, SWITCHOVER	EA	1
13	16	XADZZ		130099	89905	PIN, SWITCHOVER	EA	1
13	17	XADZZ		130091	89905	LEVER, SWITCHOVER	EA	1
13	18	XBDZZ		316041	89905	PLATE, COVER	EA	1
13	19	XBDZZ		162620	89905	SCREW, MACHINE	EA	2
13	20	XADZZ		130090	89905	PLATE, RIGHT	EA	1
13	21	XADZZ		130094	89905	LEVER, SWITCHOVER	EA	1
13	22	XDDZZ		176324	89905	SCREW	EA	1
13	23	XBDZZ		163306	89905	SCREW, MACHINE	EA	4
13	24	XADZZ		129053	89905	BEARING, SLEEVE	EA	1
13	25	XBDZZ		179120	89905	SCREW	EA	1
13	26	XADZZ		305117	89905	PLATE	EA	1

(1) ILLUSTRATION		(2)	(3)	(4)	(5)	(6)	(7)	(8)
(a) FIG. NO.	(b) ITEM NO.	SMR CODE	NATIONAL STOCK NUMBER	PART NUMBER	PSCH	DESCRIPTION  Usable On Code	U/W	QTY INC EA UNIT
13	27	XBDZZ		109286	89905	WASHER	EA	1
13	28	XBDZZ		176171	89905	SETSCREW	EA	1
13	29	XBDZZ		170271	89905	PIN	EA	2
13	30	XBDZZ		323221	89905	SLEEVE, CENTERING	EA	1
13	31	XBDZZ		171398	89905	SCREW, MACHINE	EA	1
13	32	XADZZ		130083	89905	PRISM, ALIDAJE	EA	1
13	33	XADZZ		325796	89905	HOUSING, PRISM	EA	1
13	34	XADZZ		348451	89905	MASK	EA	1
13	35	XAUZZ		328481	89905	PRISM, METAL	EA	1
13	36	XADZZ		162473	89905	SCREW, MACHINE	EA	1
13	37	XBDZZ		130087	89905	SPRING, FLAT	EA	1
13	38	XBDZZ		170972	89905	SCREW	EA	2
13	39	XBDZZ		323109	89905	U-STANDARD	EA	1
13	40	XBDZZ		136175	89905	SLEEVE, CABLE	EA	1
13	41	XBDZZ		171398	89905	SCREW	EA	1
13	42	XBDZZ		130004	89905	CLIP, CABLE	EA	1
13	43	XBDZZ		161861	89905	SCREW	EA	1
14	1	XBDZZ		129069	89905	U-WASHER	EA	1
14	2	XBDZZ		311862	89905	HOUSING, LEVEL	EA	1
14	3	XBD7Z		129063	89905	COVER, PLASTIC	EA	1
14	4	XBDZZ		136143	89905	HOUSING, SPRING	EA	1
14	5	XBDZZ		129068	89905	SPRING, COMPRESSION, HELICAL	EA	1
14	6	XBDZZ		316026	89905	BRACKET, ADJUSTING	EA	1
14	7	XBDZZ		315061	89905	BALL, PLASTIC	EA	1
14	8	XBDZZ		176077	89905	SCREW, MACHINE	EA	2
14	9	XBDZZ		162367	89905	SCREW, ADJUSTING	EA	1
14	10	XBDZZ		314565	89905	CAP, END, LEVEL	EA	1
14	11	XADZZ		136092	89905	CAP, VIAL, LEVEL	EA	2
14	12	XADZZ		129359	89905	VIAL, LEVEL, PLATE	EA	1
14	13	XBDZZ		161861	89905	SCREW	EA	6
14	14	XBDZZ		170550	89905	SCREW	EA	1



(1) ILLUSTRATION		(2)	(3)	(4)	(5)	(6)	(7)	(8)
(a) FIG. NO.	(b) ITEM NO.	SMR CODE	NATIONAL STOCK NUMBER	PART NUMBER	FSCN	DESCRIPTION  Usable On Code	U/M	QTY INC IN UNIT
15	1	XBDZZ		107343	89905	PLATE, CONNECTING	EA	1
15	2	XADZZ		166265	89905	CABLE, ELECTRIC, 24 CM	FT	1
15	3	XBDZZ		316028	89905	FLANGE, CONNECTING	EA	1
15	4	XBDZZ		136175	89905	SLEEVE, CABLE	EA	1
15	5	XBDZZ		161861	89905	SCREW, MACHINE	EA	1
15	6	XADZZ		246376	89905	TUBE, INSULATION	EA	2
15	7	XBDZZ		129054	89905	PLATE, INSULATION	EA	2
15	8	XADZZ		202709	89905	SPRING, CONTACT	EA	1
15	9	PADZZ	6675-00-378-9344	129058	89905	BUSHING, INSULATION	EA	4
15	10	XBDZZ		162473	89905	SCREW	EA	4
15	11	XADZZ		202716	89905	SPRING, CONTACT	EA	1
15	12	XBDZZ		162935	89905	SCREW, MACHINE	EA	2
15	13	XBDZZ		136064	89905	SCREW, CONNECTING	EA	1
15	14	XBDZZ		163816	89905	SETSCREW	EA	1
15	15	XBDZZ		177749	89905	SCREW	EA	3
						GROUP 05 - TELESCOPE AXIS, VERTICAL CLAMP, RETICLE ILLUMINATION ASSY, COLLIMATION ASSY, VERTICAL CIRCLE OBJECTIVES, AND VERTICAL COLLIMATION LEVEL		
		XBDZZ		360489	89905	AXIS ASSY, TELESCOPE	EA	1
		XBDDZ		316030	89905	AXIS ASSY, TELESCOPE (FIG. 16, ITEMS 2, 9, 18, 32, 49 AND 62)	EA	1
		XBDDZ		360593	89905	CLAMP ASSY, VERTICAL (FIG. 16, ITEMS 4, 5, AND 23 THROUGH 26)	EA	1
		XBDZZ		360496-74	89905	PRISM ASSY, AXIS (FIG. 16, ITEMS 7 AND 20 THROUGH 22)	EA	1
		XBDDZ		242647	89905	ILLUMINATION ASSY, RETICLE (FIG. 16, ITEMS 10 THROUGH 12, AND 14 THROUGH 16)	EA	1
		XBDDZ		360478-74	89905	COLLIMATION ASSY (FIG. 16, ITEMS 29, 33, 34, 35, 37, 38, 51, 52, 53, 55 THROUGH 59, 63, 64)	EA	1
		XBDDZ		242642	89905	LENS ASSY, ILLUMINATION (FIG. 16, ITEMS 51 AND 53)	EA	1
		XBDDZ		242587	89905	OBJECTIVE ASSY I, VERTICAL CIRCLE (FIG. 16, ITEMS 44 THROUGH 46)	EA	1
		XBDDZ		242641	89905	OBJECTIVE ASSY II, VERTICAL CIRCLE (FIG. 16, ITEMS 47 AND 48)	EA	1

(1) ILLUSTRATION		(2)	(3)	(4)	(5)	(6)	(7)	(8)
(a) FIG. NO.	(b) ITEM NO.	SMR CODE	NATIONAL STOCK NUMBER	PART NUMBER	FSCN	DESCRIPTION  Usable On Code	U/W	QTY INC IN UNIT
		XBDZZ		360475	89905	LEVEL ASSY. COLLIMATION, VERTICAL (FIG. 17, ITEMS 1 THROUGH 9, 11 THROUGH 19, 23, 24, 25, AND 27)	EA	1
		XBDZZ		314568	89905	LEVER, COLLIMATION (FIG. 17, ITEMS 2 AND 3)	EA	1
		PADZZ	6675-00-353-4093	360472	89905	LEVEL ASSY. COLLIMATION (FIG. 17, ITEMS 17 AND 18)	EA	1
		XBDZZ		242648	89905	PRISM ASSY. READING	EA	1
16	1	XBDZZ		163656	89905	SETSCREW	EA	3
16	2	XBDZZ		316031	89905	BEARING, LEFT	EA	1
16	3	XBDZZ		162901	89905	SCREW	EA	2
16	4	XBDZZ		171481	89905	SCREW	EA	3
16	5	XBDZZ		316036	89905	RING, CLAMP, VERTICAL	EA	1
16	6	XBDZZ		163836	89905	SETSCREW	EA	1
16	7	XBDZZ		175232	89905	SCREW	EA	1
16	8	XBDZZ		316035	89905	MOUNT, OBJECTIVE	EA	1
16	9	XBDZZ		316033	89905	AXIS, TELESCOPE	EA	1
16	10	PADZZ	6675-00-253-5496	171916	89905	REFLECTOR ASSEMBLY	EA	1
16	11	XBDZZ		136003	89905	SLEEVE, BEARING	EA	1
16	12	XBDZZ		202606	89905	WASHER, SPRING	EA	1
16	13	XBDZZ		170897	89905	SCREW	EA	2
16	14	XBDZZ		163807	89905	SETSCREW	EA	2
16	15	XBDZZ		136001	89905	STOP, PIN	EA	1
16	16	XBDZZ		136002	89905	KNOB	EA	1
16	17	XBDZZ		171280	89905	SCREW	EA	1
16	18	XBDZZ		343590	89905	BEARING, RIGHT	EA	1
16	19	XBDZZ		163807	89905	SETSCREW	EA	4
16	20	XBDZZ		129158	89905	HOUSING, PRISM, AXIS	EA	1
16	21	XBDZZ		129159	89905	PRISM, AXIS	EA	1
16	22	XBDZZ		163836	89905	SETSCREW	EA	2
16	23	XBDZZ		129166	89905	KNOB, CLAMP	EA	1
16	24	XBDZZ		177745	89905	SCREW	EA	1
16	25	XBDZZ		129170	89905	PIN, CLAMP	EA	1
16	26	XBDZZ		129164	89905	SHOE, CLAMP	EA	1
16	27	XBDZZ		130009	89905	SCREW, ALLENHEAD	EA	4

(1) ILLUSTRATION		(2)	(3)	(4)	(5)	(6)	(7)	(8)
(a) FIG. NO.	(b) ITEM NO.	SWR CODE	NATIONAL STOCK NUMBER	PART NUMBER	FSCM	DESCRIPTION  Usable On Code	U/M	QTY INC IN UNIT
16	28	XBDZZ		162905	89905	SCREW	EA	4
16	29	XBDZZ		129075	89905	SLEEVE, MOUNT, PRISM	EA	1
16	30	XBDZZ		163679	89905	SETSCREW	EA	2
16	31	XBDZZ		305169	89905	CIRCLE, VERTICAL	EA	1
16	32	XBDZZ		319096	89905	CARRIER, CIRCLE	EA	1
16	33	XBDZZ		129095	89905	MOUNT, PRISM	EA	1
16	34	XBDZZ		170550	89905	SCREW	EA	3
16	35	XBDZZ		129096	89905	COVER, MOUNT, PRISM	EA	1
16	36	XBDZZ		129077	89905	PRISM	EA	1
16	37	XBDZZ		170881	89905	SCREW	EA	3
16	38	XBDZZ		162576	89905	SCREW, MACHINE	EA	4
16	39	XBDZZ		332336	89905	PRISM, READING	EA	2
16	40	XBDZZ		348467	89905	PLATE	EA	1
16	41	XBDZZ		163816	89905	SETSCREW	EA	8
16	42	XBDZZ		329591	89905	SCREW	EA	1
16	43	XBDZZ		161861	89905	SCREW	EA	2
16	44	XBDZZ		129091	89905	MOUNT, LENS	EA	1
16	45	XBDZZ		129087	89905	LENS, OBJECTIVE	EA	1
16	46	XBDZZ		130002	89905	WASHER	EA	1
16	47	XADZZ		129090	89905	LENS, OBJECTIVE	EA	1
16	48	XADZZ		129092	89905	MOUNT, LENS	EA	1
16	49	XBDZZ		316032	89905	BEARING, CARRIER	EA	1
16	50	XBDZZ		171578	89905	SCREW, COVER	EA	2
16	51	XADZZ		243106	89905	LENS, ILLUMINATION	EA	1
16	52	XBDZZ		161860	89905	SCREW, MACHINE	EA	3
16	53	XADZZ		129097	89905	SLEEVE, MOUNT, LENS	EA	1
16	54	XBDZZ		129104	89905	SLEEVE, CONTACT ASSEMBLY	EA	1
16	55	XBDZZ		129101	89905	BUSHING, INSULATION	EA	1
16	56	XBDZZ		197550	89905	SCREW	EA	3
16	57	XBDZZ		122701	89905	SPRING	EA	1
16	58	XBDZZ		129100	89905	WASHER, INSULATION	EA	1
16	59	XBDZZ		12999	89905	CONTACT, ILLUMINATION, VERTICAL	EA	1

(1) ILLUSTRATION		(2)	(3)	(4)	(5)	(6)	(7)	(8)
(a) FIG. NO.	(b) ITEM NO.	SMR CODE	NATIONAL STOCK NUMBER	PART NUMBER	PCOM	DESCRIPTION  Usable On Code	U/M	QTY INC IN CABINET
16	60	XBDZ7		162888	89905	SCREW	EA	-
16	61	XBDZ2		176554	89905	SETSCREW	EA	2
16	62	XBDZ2		129072	89905	CARRIER, PRISM	EA	-
16	63	XBDZ2		311975	89905	MARK	EA	1
16	64	XBDZ2		252065	89905	SCREW	EA	2
17	1	XBDZ2		162030	89905	SCREW	EA	2
17	2	XBDZ2		314567	89905	LEVER	EA	1
17	3	XBDZ2		314566	89905	FLANGE	EA	1
17	4	XBDZ2		177752	89905	SCREW	EA	1
17	5	XBDZ2		175250	89905	SCREW	EA	3
17	6	XBDZ2		129126	89905	HOUSING, PRISM	EA	1
17	7	XBDZ2		170276	89905	PIN	EA	2
17	8	XBDZ2		161861	89905	SCREW	EA	6
17	9	XBDZ2		514569	89905	HOUSING, LEVEL	EA	1
17	10	XBDZ2		163809	89905	SETSCREW	EA	1
17	11	XBDZ2		129119	89905	PRISM, METAL	EA	2
17	12	XBDZ2		129117	89905	PRISM, READING	EA	1
17	13	XBDZ2		129116	89905	PRISM, READING	EA	1
17	14	XBDZ2		129118	89905	PLATE, COVER	EA	1
17	15	XBDZ2		162908	89905	SCREW	EA	2
17	16	XBDZ2		314570	89905	CAP, COVER	EA	1
17	17	XADZ2		129120	89905	CAP, END	EA	2
17	18	XADZ2		129114	89905	VIAL, LEVEL, COLLIMATION	EA	1
17	19	XBDZ2		162247	89905	SCREW	EA	2
17	20	XBDZ2		170174	89905	PIN	EA	1
17	21	XBDZ2		316039	89905	MIRROR, METAL	EA	1
17	22	XBDZ2		176091	89905	SETSCREW	EA	1
17	23	XBDZ2		161941	89905	SCREW	EA	2
17	24	XADZ2		129124	89905	PRISM, READING	EA	1
17	25	XADZ2		129125	89905	MOUNT, PRISM	EA	1
17	26	XBDZ2		161941	89905	SCREW	EA	1
17	27	XBDZ2		162146	89905	SCREW	EA	1

(1) ILLUSTRATION		(2)	(3)	(4)	(5)	(6)	(7)	(8)
(a) FIG. NO.	(b) ITEM NO.	SMR CODE	NATIONAL STOCK NUMBER	PART NUMBER	FSCM	DESCRIPTION  Usable On Code	U/M	QTY INC IN UNIT
						GROUP 06 - ADJUSTING PRISM AND OPTICAL MICROMETER		
		XBDDZ		322592	89905	PRISM ASSEMBLY, ADJUSTING (FIG. 18, ITEMS 3 THROUGH 6, 8 AND 9)	EA	1
		XBDDZ		363902	89905	MICROMETER ASSEMBLY, OPTICAL (FIG. 19, ITEMS 1 THROUGH 15 AND 17 THROUGH 41)	EA	1
		XBDDZ		363901	89905	MICROMETER ASSEMBLY (FIG. 19, ITEMS 2, 7, 11, 13, 18, 23 THROUGH 34, 36, 37, 39, 40 AND 41)	EA	1
18	1	XBDZZ		311980	69905	SCREW	EA	3
18	2	XBDZZ		311987	89905	SPRING	EA	3
18	3	XBDZZ		323156	89905	SCREW, ADJUSTING	EA	1
18	4	XADZZ		311979	89905	MOUNT, PRISM	EA	1
18	5	XBDZZ		214372	89905	BALL	EA	2
18	6	XBDZZ		175371	89905	SETSCREW	EA	3
18	7	XBDZZ		167004	89905	BALL, STEEL	EA	1
18	8	XADZZ		323249	89905	PRISM	EA	1
18	9	XBDZZ		323155	89905	SCREW, ADJUSTING	EA	1
19	1	XBDZZ		171394	89905	SCREW, MACHINE	EA	2
19	2	XBDZZ		107367	89905	MOUNT, PRISM	EA	1
19	3	XBDZZ		107363	89905	MASK	EA	2
19	4	XBDZZ		335608	89905	PRISM, MICROMETER, DEG	EA	1
19	5	XBDZZ		305161	89905	PRISM, MICROMETER	EA	1
19	6	XBDZZ		163635	89905	SETSCREW	EA	5
19	7	XBDZZ		171144	89905	SCREW	EA	2
19	8	XBDZZ		161909	89905	SCREW	EA	2
19	9	XBDZZ		107375	89905	MOUNT, PRISM	EA	1
19	10	XBDZZ		305163	89905	PRISM, ILLUMINATION, MICROMETER	EA	1
19	11	XBDZZ		107372	89905	PLATE, LENS	EA	1
19	12	XBDZZ		170550	89905	SCREW	EA	1
19	13	XBDZZ		162629	89905	SCREW, MACHINE	EA	2
19	14	XBDZZ		136043	89905	LENS	EA	1
19	15	XBDZZ		107373	89905	RING, LOCK	EA	1
19	16	XBDZZ		335235	89905	WASHER	EA	1

(1) ILLUSTRATION		(2)	(3)	(4)	(5)	(6)	(7)	(8)
(a) FIG NO	(b) ITEM NO	MR CODE	WARRANTY STOCK NUMBER	PART NUMBER	FROM	DESCRIPTION  Usable Or Code	U/M	QTY INC IN UNIT
19	17	XBDZZ		170545	89905	SCREW	EA	3
19	18	XBDZZ		107366	89905	MOUNT, CIRCLE	EA	1
19	19	XBDZZ		305164	89905	CIRCLE, MICROMETER, DEG	EA	1
19	20	XBDZZ		129142	89905	LOCKNUT	EA	1
19	21	XBDZZ		107376	89905	PLATE, PLANE, PARALLEL, DEG	EA	1
19	22	XBDZZ		136152	89905	WASHER	EA	2
19	23	XBDZZ		107380	89905	LEVER, LEFT	EA	1
19	24	XBDZZ		202755	89905	SCREW, PIN	EA	2
19	25	XBDZZ		171670	89905	SPRING, BRAKE, LEFT	EA	1
19	26	XBDZZ		136153	89905	WASHER	EA	2
19	27	XBDZZ		107383	89905	PIN, BEARINGS	EA	2
19	28	XBDZZ		329359	89905	SCREW, COVER	EA	2
19	29	XBDZZ		329355	89905	PLATE, COVER	EA	1
19	30	XBDZZ		356050	89905	RING, STOP	EA	1
19	31	XBDZZ		163807	89905	SETSCREW	EA	4
19	32	XBDZZ		107385	89905	KNOB, MICROMETER	EA	1
19	33	XBDZZ		177721	89905	SCREW	EA	2
19	34	XBDZZ		356049	89905	PLATE, STOP	EA	1
19	35	XBDZZ		107374	89905	PLATE, COVER	EA	1
19	36	XBDZZ		171671	89905	SPRING, BRAKE, RIGHT	EA	1
19	37	XBDZZ		107365	89905	WHEEL CURVE	EA	1
19	38	XBDZZ		107377	89905	PLATE PLANE, PARALLEL, DEG	EA	1
19	39	XBDZZ		129133	89905	SPRING	EA	2
19	40	XBDZZ		107381	89905	LEVER, RIGHT	EA	1
19	41	XBDZZ		107382	89905	PIN	EA	2
						GROUP 07 - TELESCOPE OBJECTIVE AND TELESCOPE EYEPIECE TUBE		
		XBDZZ		195691	89905	OBJECTIVE TELESCOPE	EA	1
		XBDZZ		363903	89905	EYEPIECE TUBE ASSY, TELESCOPE (FIG. 21, ITEMS 1 THROUGH 10, 12, 13, 14 AND 16 THROUGH 31)	EA	1
		XBDZZ		195900	89905	EYEPIECE ASSY, TELESCOPE (FIG. 21, ITEMS 1, 2, 23, 24 AND 26 THROUGH 31)	EA	1

(1) ILLUSTRATION		(2)	(3)	(4)	(5)	(6)	(7)	(8)
(a) FIG. NO.	(b) ITEM NO.	SMR CODE	NATIONAL STOCK NUMBER	PART NUMBER	FSCN	DESCRIPTION  Usable On Code	U/M	QTY INC IN UNIT
		XBDZZ		363905-74	89905	TUBE ASSY, FOCUS (FIG. 21, ITEMS 5, 6, 7, 9, 13, 14, 22 AND 25)	EA	1
		XBDZZ		202316	89905	LENS ASSY, FOCUS (FIG. 21, ITEMS 8 AND 10)	EA	1
		XBDZZ		363906	89905	RETICLE ASSY, TEL (FIG. 21, ITEMS 19, 20 AND 21)	EA	1
20	1	PAQZZ	6675-00-979-8744	331350	89905	SUNSHADE	EA	
20	2	XBDZZ		125685	89905	COVER, LENS	EA	1
20	3	XBDZZ		335569	89905	RING, SPACER	EA	1
20	4	XBDZZ		170550	89905	SETSCREW	EA	
20	5	XBDZZ		187900	89905	LENS, OBJECTIVE	EA	1
20	6	XBDZZ		122681	89905	RING, SPACER	EA	1
20	7	XBDZZ		187902	89905	LENS, OBJECTIVE	EA	1
20	8	XBDZZ		202613	89905	RING, SPACER	EA	1
20	9	XBDZZ		200535	89905	LENS, OBJECTIVE	EA	1
20	10	XBDZZ		202612	89905	HOUSING, OBJECTIVE	EA	1
20	11	XBDZZ		202749	89905	RING SIGHT	EA	1
20	12	XBDZZ		170559	89905	SETSCREW	EA	3
20	13	XBDZZ		234018	89905	WASHER	EA	1
20	14	XBDZZ		163812	89905	SETSCREW	EA	1
21	1	XBDZZ		122717	89905	RING, DIOPTEP	EA	1
21	2	XBDZZ		163788	89905	SETSCREW	EA	3
21	3	XBDZZ		202620	89905	COUNTERWEIGHT	EA	1
21	4	XBDZZ		161017	89905	SCREW	EA	3
21	5	XBDZZ		202619	89905	SLEEVE, FOCUSING	EA	1
21	6	XBDZZ		107404	89905	TUBE, FOCUSING	EA	1
21	7	XBDZZ		171289	89905	SCREW	EA	1
21	8	XADZZ		202615	89905	MOUNT, LENS, FOCUS	EA	1
21	9	XBDZZ		107408	89905	SLIDE, FOCUSING	EA	1
21	10	XADZZ		107442	89905	LENS, FOCUSING	EA	1
21	11	XBDZZ		177751	89905	SCREW	EA	4
21	12	XBDZZ		163788	89905	SETSCREW	EA	2
21	13	XBDZZ		161642	89905	SCREW	EA	2

(1) ILLUSTRATION		(2)	(3)	(4)	(5)	(6)	(7)	(8)
(a) FIG NO.	(b) ITEM NO.	MR CODE	NATIONAL STOCK NUMBER	PART NUMBER	FSC#	DESCRIPTION  Usable On Code	U/W	QTY INC IN UNIT
21	14	XBDZZ		316040	89905	MOUNT, EYEPIECE	EA	1
21	15	XBDZZ		163788	89905	SETSCREW	EA	1
21	16	XBDZZ		188760	89905	SCREW, ADJUSTING	EA	2
21	17	XBDZZ		107411	89905	WASHER	EA	4
21	18	XBDZZ		188858	89905	SCREW	EA	2
21	19	XBDZZ		119227	89905	LOCK RING	EA	1
21	20	XBDZZ		215899	89905	RETICLE	EA	1
21	21	XBDZZ		107409	89905	HOUSING, RETICLE	EA	1
21	22	XBDZZ		107410	89905	RING, RETAINING	EA	1
21	23	XBDZZ		215142	89905	SCREW	EA	1
21	24	XBDZZ		108396	89905	FLANGE	EA	1
21	25	XBDZZ		107412	89905	LOCKNUT	EA	1
21	26	XBDZZ		200455	89905	SLEEVE, THREADED	EA	1
21	27	XBDZZ		200456	89905	RING, LOCK	EA	1
21	28	XBDZZ		200459	89905	LENS, EYEPIECE	EA	1
21	29	XBDZZ		169693	89905	RING, SPACER	EA	1
21	30	XBDZZ		200460	89905	LENS, EYEPIECE	EA	1
21	31	XBDZZ		258785	89905	WASHER	EA	1
						GROUP 08 - READING MICROSCOPE AND ILLUMINATION MIRROR		
		XBDDZ		360477	89905	MICROSCOPE ASSY READING (FIG. 22, ITEMS 1 THROUGH 8)	EA	1
		XBDZZ		242651	89905	OBJECTIVE ASSY, READING MICROSCOPE (FIG. 22, ITEMS 1 AND 2)	EA	1
		XBDDZ		360476	89905	EYEPIECE ASSY, READING MICROSCOPE (FIG. 22, ITEMS 3 THROUGH 6)	EA	1
		PAOZZ		360473	89905	MIRROR ASSY, ILLUMINATION (FIG. 23, ITEMS 1 THROUGH 6)	EA	2
22	1	XADZZ		107418	89905	MOUNT, LENS	EA	1
22	2	XADZZ		107417	89905	LENS, OBJECTIVE	EA	1
22	3	XADZZ		314572	89905	TUBE, MICROSCOPE READING	EA	1
22	4	XADZZ		109260	89905	LENS ASSY	EA	1
22	5	XADZZ		202610	89905	RING, SPACER	EA	1
22	6	XADZZ		200536	89905	LENS	EA	1



(1) ILLUSTRATION		(2)	(3)	(4)	(5)	(6)	(7)	(8)
(a) FIG. NO.	(b) ITEM NO.	SNR CODE	NATIONAL STOCK NUMBER	PART NUMBER	FSCM	DESCRIPTION  Usable On Code	J/M	QTY INC IN UNIT
22	7	XBDZZ		109256	89905	SLEEVE, MILLED	EA	1
22	8	XBDZZ		163786	89905	SETSCREW	EA	2
22	9	XBDZZ		163831	89905	SETSCREW	EA	1
23	1	XAOZZ		311859	89905	SLEEVE, MIRROR	EA	1
23	2	XAOZZ		212710	89905	AXIS, MIRROR	EA	1
23	3	XAOZZ		212711	89905	PIN	EA	1
23	4	XAOZZ		109283	89905	MIRROR	EA	1
23	5	XAOZZ		311858	89905	MOUNT, MIRROR	EA	1
23	6	XBDZZ		163673	89905	SETSCREW	EA	1
						GROUP 09 - HORIZONTAL, VERTICAL AND COLLIMATION SLOW MOTION SCREWS		
		XBDZZ		242645	89905	SLOW MOTION SCREW ASSY, HORIZONTAL (FIG. 24, ITEMS 4 THROUGH 11)	EA	1
		XBDZZ		242643	89905	SLOW MOTION SCREW ASSY, VERTICAL (FIG. 25, ITEMS 4 THROUGH 12)	EA	1
		XBDZZ		242644	89905	SLOW MOTION SCREW ASSY COLLIMATION (FIG. 26, ITEMS 4 THROUGH 12)	EA	1
24	1	XBDZZ		136087	89905	HOUSING	EA	1
24	2	XBDZZ		136084	89905	SPRING	EA	1
24	3	XBDZZ		136083	89905	HOUSING, SPRING	EA	1
24	4	XBDZZ		136193	89905	PIN	EA	1
24	5	XBDZZ		129993	89905	RING, LOCK	EA	1
24	6	XBDZZ		162165	89905	SCREW	EA	1
24	7	XBDZZ		129975	89905	HOUSING	EA	1
24	8	XBDZZ		136075	89905	KNOB	EA	1
24	9	XBDZZ		305094	89905	SCREW, TANGENT, COMPOSED OF ITEMS 9 AND 9A WHICH CANNOT BE ORDERED SEPARATELY	EA	1
24	10	XBDZZ		129980	89905	NUT, ADJUSTING	EA	1
24	11	XBDZZ		305098	89905	BUSHING, STOP	EA	1
25	1	XBDZZ		129991	89905	HOUSING	EA	1
25	2	XBDZZ		136084	89905	SPRING	EA	1
25	3	XBDZZ		136083	89905	HOUSING, SPRING	EA	1
25	4	XADZZ		305093	89905	BUSHING, STOP	EA	1

(1) ILLUSTRATION		(2)	(3)	(4)	(5)	(6)	(7)	(8)
(a) FIG. NO.	(b) ITEM NO.	SYM CODE	NATIONAL STOCK NUMBER	PART NUMBER	FSCN	DESCRIPTION  Usable On Code	U/M	QTY INC IN UNIT
25	5	XADZZ		129394	89905	PIN	EA	1
25	6	XADZZ		129993	89905	RING, LOCK	EA	1
25	7	XADZZ		305094	89905	SCREW, TANGENT, COMPOSED OF ITEMS 7 AND 7A WHICH CANNOT BE ORDERED SEPARATELY	EA	1
25	8	XBDZZ		136075	89905	KNOB	EA	1
25	9	XADZZ		129980	89905	NUT, ADJUSTING	EA	1
25	10	XADZZ		129975	89905	HOUSING	EA	1
25	11	XBDZZ		162165	89905	SCREW	EA	1
25	12	XBDZZ		163812	89905	SETSCREW	EA	1
26	1	XBDZZ		129986	89905	HOUSING	EA	1
26	2	XBDZZ		136084	89905	SPRING	EA	1
26	3	XBDZZ		136083	89905	HOUSING, SPRING	EA	1
26	4	XADZZ		305093	89905	BUSHING, STOP	EA	1
26	5	XBDZZ		135247	89905	PIN	EA	1
26	6	XADZZ		129993	89905	RING, LOCK	EA	1
26	7	XADZZ		305097	89905	SCREW, TANGENT, COMPOSED OF ITEMS 7 AND 7A WHICH CANNOT BE ORDERED SEPARATELY	EA	1
26	8	XBDZZ		136076	89905	KNOB	EA	1
26	9	XADZZ		129980	89905	NUT, ADJUSTING	EA	1
26	10	XADZZ		129975	89905	HOUSING	EA	1
26	11	XBDZZ		162165	89905	SCREW	EA	1
26	12	XBDZZ		163816	89905	SETSCREW	EA	1
		PAOFZ	6675-00-714-1375	268034	89905	GROUP 10 - HANDLAMP, CONNECTING CABLE AND BATTERY BOX HANDLAMP (FIG. 27, ITEMS 4 THROUGH 20)	EA	1
		PAOZZ	5675-00-997-4341	246416	89905	CABLE ASSY, CONNECTING (FIG. 27, ITEMS 21 THROUGH 23)	EA	1
		PAOFZ	6675-00-997-4340	310443	89905	BOX ASSY, BATTERY (FIG. 28, ITEMS 1 THROUGH 31)	EA	1
27	1	XBFZZ		101615	89905	SLEEVE	EA	1
27	2	PAOZZ	6675-00-859-5936	166370	89905	BULB, 2.5 V	EA	1
27	3	XAOZZ		215105	89905	HOUSING, LAMP	EA	1
27	4	XBFZZ		317080	89905	SLIDE, SWITCH	EA	1

(1) ILLUSTRATION		(2)	(3)	(4)	(5)	(6)	(7)	(8)
(a) FIG. NO.	(b) ITEM NO.	SHR CODE	NATIONAL STOCK NUMBER	PART NUMBER	FSCM	DESCRIPTION  Usable On Code	U/M	QTY INC IN UNIT
27	5	XB0ZZ		177189	89905	SCREW	EA	1
27	6	XB FZZ		112809	89905	INSULATION	EA	1
27	7	XB FZZ		176037	89905	SCREW	EA	2
27	8	XB FZZ		101584	89905	SPRING, CONTACT	EA	1
27	9	XB FZZ		176032	89905	SCREW	EA	1
27	10	XB FZZ		800206	89905	SLEEVE, RUBBER	EA	1
27	11	XA0ZZ		105392	89905	COVER, END	EA	1
27	12	XB FZZ		167435	89905	SLEEVE, CABLE	EA	4
27	13	XB FZZ		317076	89905	WEDGE	EA	2
27	14	XB FZZ		196329	89905	WIRE, COPPER, 3 CM	EA	1
27	15	XB0ZZ		215103	89905	HOOK	EA	1
27	16	XB0ZZ		800860	89905	HOLDER, LAMP	EA	1
27	17	XB FZZ		193056	89905	SWITCH, SLIDE	EA	1
27	18	XB FZZ		112298	89905	PLATE	EA	1
27	19	XB FZZ		193807	89905	CABLE, ELECTRIC	FT	1
27	20	XB FZZ		193179	89905	PLUG, ELECTRIC	EA	1
27	21	XA0ZZ		193179	89905	PLUG, ELECTRIC	EA	2
27	22	XA0ZZ		193801	89905	CABLE, ELECTRIC, 1.1 M	FT	1
27	23	XA0ZZ		193848	89905	TUBE, INSULATING	EA	4
28	1	XB0ZZ		122336	89905	PLATE, INSULATION	EA	1
28	2	XB FZZ		198388	89905	RIVET	EA	2
28	3	PA0ZZ	5935-00-951-2019	122337	89905	PLATE, CONTACT	EA	1
28	4	XB0ZZ		124724	89905	SPRING, CONTACT	EA	2
28	5	XB0ZZ		193248	89905	NUT	EA	2
28	6	FA FZZ	5905-00-118-4625	193808	89905	RHEOSTAT	EA	1
28	7	XB FZZ		167456	89905	CLIP, CABLE	EA	1
28	8	XB FZZ		176063	89905	SPRING	EA	1
28	9	XB0ZZ		198386	89905	SCREW, MACHINE	EA	1
28	10	XB FZZ		188790	89905	CABLE, ELECTRIC	FT	1
28	11	XB FZZ		189189	89905	TUBE, INSULATION	FT	1
28	12	XB0ZZ		170920	89905	SCREW	EA	2

(1) ILLUSTRATION		(2)	(3)	(4)	(5)	(6)	(7)	(8)
(a) FIG NO	(b) ITEM NO	SMR CODE	NATIONAL STOCK NUMBER	PART NUMBER	FSCM	DESCRIPTION  Usable On Code	U/M	QTY INC IN UNIT
28	13	XBFZZ		122284	89905	PLUG, ELECTRIC	EA	2
28	14	XBOZZ		310432	89905	BATTERY, DUMMY	EA	2
28	15	PAOZZ	66-00-859-5936	166370	89905	BULB, 2.5 V	EA	4
28	16	PAFZZ		122343	89905	SPRING, PLATE, COVER	EA	1
28	17	PAOZZ		198389	89905	SCREW, WOOD	EA	3
28	18	XBFZZ		122344	89905	CONTACT	EA	1
28	19	XBOZZ		122335	89905	KNOB, PLATE, COVER	EA	1
28	20	XBOZZ		122334	89905	PLATE, COVER	EA	1
28	21	XBOZZ		310439	89905	BLOCK, WOOD	EA	1
28	22	XBFZZ		122345	89905	PLATE, CONTACT	EA	1
28	23	XBOZZ		198387	89905	NUT	EA	1
28	24	PAOZZ		198390	89905	SCREW, WOOD	EA	3
28	25	XAOZZ		311718	89905	CASE, BATTERY	EA	1
28	26	XBOZZ		221167	89905	SETSL EW	EA	1
28	27	XBOZZ		122339	89905	KNOB, RHEOSTAT	EA	1
28	28	XBOZZ		212165	89905	WIN	EA	1
28	29	XBOZZ		122338	89905	WASHER	EA	1
28	30	XBOZZ		167292	89905	STRAP, CARRYING	EA	1
28	31	XBOZZ		212163	89905	SCREW	EA	2
						GROUP 11 - ACCESSORY CASE, FILLED		
		XBOZZ		323108	89905	CASE, ACCESSORY, FILLED (FIG. 29, ITEMS 1 THROUGH 8, FIG. 30, ITEMS 1 THROUGH 10, FIG. 31, ITEMS 1 THROUGH 28, AND FIG. 32, ITEMS 1 THROUGH 28)	EA	1
		XBDZZ		258814	89905	OBJECTIVE II ASSY (FIG. 31, ITEMS 9 THROUGH 11)	EA	1
		XBDZZ		258813	89905	OBJECTIVE I ASSY (FIG. 31, ITEMS 12 AND 13)	EA	1
		XBDZZ		274830	89905	LENS ASSEMBLY (FIG. 31, ITEMS 25 AND 26)	EA	1
		XBDZZ		322430	89905	EYEPIECE ASSY (FIG. 32, ITEMS 1 THROUGH 6 AND 8)	EA	1
		XBDZZ		258814	89905	OBJECTIVE II ASSY (FIG. 32, ITEMS 9 THROUGH 11)	EA	1
		XBDZZ		258813	89905	OBJECTIVE I ASSY (FIG. 32, ITEMS 12 AND 13)	EA	1

(1) ILLUSTRATION		(2)	(3)	(4)	(5)	(6)	(7)	(8)
(a) FIG. NO.	(b) ITEM NO.	SMR CODE	NATIONAL STOCK NUMBER	PART NUMBER	FSCM	DESCRIPTION  Usable On Code	U/M	QTY IN UNIT
		XBDZZ		195735	89905	PRISM ASSY (FIG. 32, ITEMS 20 AND 23)	EA	1
29	1	XBOZZ		134253	89905	CASE, ACCESSORY	EA	1
29	2	PAOZZ	6675-00-980-0118	311844	89905	COVER, PLASTIC	EA	1
29	3	PAOZZ	6675-00-378-9401	284836	89905	SUNGLASS, BLACK	EA	1
29	4	PAOZZ	6675-00-353-4103	109334	89905	PIA, ADJUSTING	EA	2
29	5	PAOZZ	5120-00-446-2860	166786	89905	SCREWDRIVER	EA	1
29	6	PAOZZ	7920-00-378-9524	109335	89905	BRUSH, DUST	EA	1
29	7	PAOZZ	6675-00-146-1762	167226	89905	CONTAINER, GREASE	EA	1
29	8	PAOZZ	8330-00-965-1722	166684	89905	CHAMDIS	EA	1
29	9	PAOZZ	6675-00-863-7471	316106	89905	FITTING, LAMP, ELECTRIC (FIG 30, ITEMS 1 THROUGH 10)	EA	2
29	10	XBODZ		323133	89905	FYEPIECE, DIAGONAL, TELESCOPE (FIG. 31, ITEMS 1 THROUGH 28)	EA	1
29	11	XBODZ		323134	89905	EYEPIECE, DIAGONAL, MICROSCOPE (FIG. 32, ITEMS 1 THROUGH 28)	EA	1
30	1	XBOZZ		162873	89905	SCREW	EA	4
30	2	XAOZZ		107357	89905	BUSHING, INSULATION	EA	4
30	3	XAOZZ		107356	89905	SPRING, CONTACT	EA	2
30	4	XAOZZ		107355	89905	PLATE, INSULATION	EA	2
30	5	XAOZZ		316107	89905	HOUSING, LAMP	EA	1
30	6	PAOZZ	6675-00-859-5936	166370	89905	BULB, 2.5 V	EA	1
30	7	XAOZZ		136167	89905	SOCKET, LAMP	EA	1
30	8	XAOZZ		136134	89905	HOUSING	EA	1
30	9	XAOZZ		107354	89905	PLATE, COVER	EA	1
30	10	PAFZZ	6675-00-439-8054	109276	89905	GROUNDGLASS	EA	1
31	1	XBDZZ		122714	89905	SLEEVE, INDEX	EA	1
31	2	XBDZZ		163788	89905	SETSCREW	EA	3
31	3	XADZZ		200455	89905	MOUNT, EYEPIECE	EA	1
31	4	XADZZ		258785	89905	WASHER O-RING	EA	1
31	5	XADZZ		200460	89905	LENS, EYEPIECE	EA	1
31	6	XADZZ		169693	89905	RING, SPACER	EA	1
31	7	XADZZ		200459	89905	LENS, EYEPIECE	EA	1
31	8	XADZZ		200456	89905	RING, SPACER	EA	1

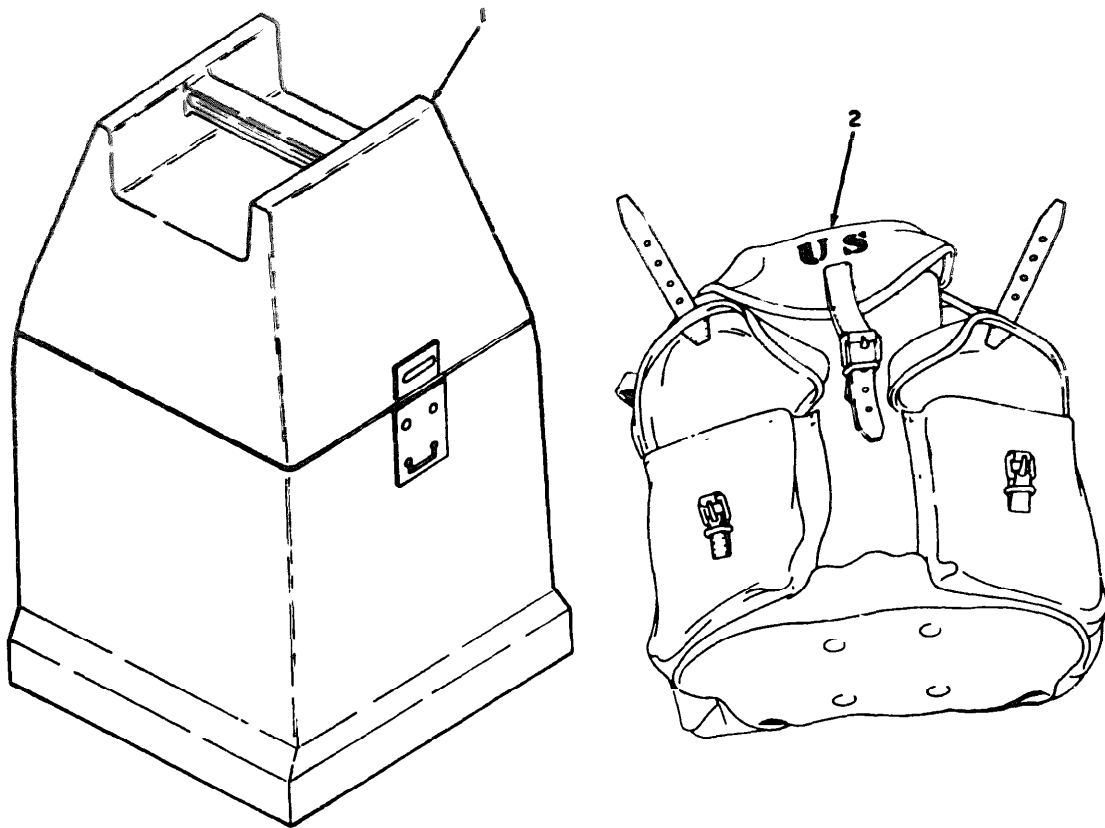
(1) ILLUSTRATION		(2)	(3)	(4)	(5)	(6) DESCRIPTION	(7)	(8) QTY INC IN UNIT
(a) NO	I& NO	SMR CODE	NATIONAL STOCK NUMBER	PART NUMBER	FSCM	USABLE ON CODE	U/M	UNIT
31	9	XADZZ		124083	89905	LOCK RING	EA	1
31	10	XADZZ		124085	89905	LENS, OBJECTIVE	EA	1
31	11	XADZZ		258795	89905	MOUNT, LENS	EA	1
31	12	XADZZ		258794	89905	MOUNT, LENS	EA	1
31	13	XADZZ		124084	89905	LENS, OBJECTIVE	EA	1
31	14	XBDZZ		124094	89905	BUSHING, CONNECTOR	EA	1
31	15	XBDZZ		124093	89905	SPRING	EA	1
31	16	XBDZZ		161642	89905	SCREW	EA	1
31	17	XBDZZ		124092	89905	SLEEVE, CENTERING	EA	1
31	18	XBDZZ		170576	89905	SCREW	EA	1
31	19	XBDZZ		163612	89905	SETSCREW	EA	3
31	20	XBDZZ		322424	89905	HEAD, CONNECTING	EA	1
31	21	XBDZZ		176213	89905	SCREW	EA	1
31	22	XBDZZ		322425	89905	HOUSING, PRISM	EA	1
31	23	XBDZZ		175232	89905	SETSCREW	EA	1
31	24	XBDZZ		124095	89905	PRISM	EA	1
31	25	XADZZ		124087	89905	MOUNTLENS	EA	1
31	26	XADZZ		124086	89905	LENS	EA	1
31	27	XBDZZ		170550	89905	SETSCREW	EA	3
31	28	XBDZZ		322423	89905	TUBE, EYEPIECE	EA	1
32	1	XADZZ		109258	89905	TUBE, MILLED	EA	1
32	2	XDDZZ		163786	89905	SETSCREW	EA	1
32	3	XADZZ		109260	89905	LENS, EYEPIECE	EA	1
32	4	XADZZ		262610	89905	RING, SPACER	EA	1
32	5	XADZZ		200536	89905	LENS EYEPIECE	EA	1
32	6	XADZZ		108069	89905	MOUNT, EYEPIECE	EA	1
32	7	XBDZZ		322447	89905	SLEEVE, EYEPIECE	EA	1
32	8	XBDZZ		161015	89905	SCREW	EA	1
32	9	XADZZ		124083	89905	LOCK RING	EA	1
32	10	XADZZ		124085	89905	LENSOBJECTIVE	EA	1
32	11	XADZZ		258795	89905	MOUNT, LENS	EA	1

( 1 ) ILLUSTRATION		( 2 )	( 3 )	( 4 )	( 5 )	( 6 )	( 7 )	( 8 )
( a ) FIG. No.	( b ) ITEM NO.	SMR CODE	NATIONAL STOCK NUMBER	PART NUMBER	FSCH	DESCRIPTION  Usable On Code	U/U	QTY INC IN UNIT
32	12	XADZZ		258794	89905	MOUNT, LENS	EA	1
32	13	XADZZ		124084	89905	LENS, OBJECTIVE	EA	1
32	14	XBDZZ		322434	89905	HEAD, CONNECTING	EA	1
32	15	XBDZZ		170550	09905	SCREW	EA	3
32	16	XBDZZ		170545	89905	SETSCREW	EA	2
32	17	XBDZZ		234548	89905	LENS	EA	1
32	18	XBDZZ		322437	89905	MOUNT, LENS	EA	1
32	19	XBDZZ		171274	89905	SCREW	EA	2
32	20	XADZZ		124099	89905	HOUSING, PRISM	EA	1
32	21	XBDZZ		322440	83905	COVER	EA	1
32	22	XBDZZ		163656	8990s	SETSCREW	EA	2
32	23	XADZZ		124098	89905	PRISM	EA	1
32	24	XBDZZ		170383	89905	PIN	EA	1
32	25	XBDZZ		200409	89905	LOCKSCREW	EA	1
32	26	XBDZZ		322452	89905	LEVER, LOCKING	EA	1
32	27	XBDZZ		322455	89905	T U B E , M A I N E Y E P I E C E	EA	1
32	28	XBDZZ		170550	89905	SETSCREW	EA	4
						GROUP 12 - TRIPOD, GST20-1		
		XBOOZ		312994	89905	TRIPOD, GST20(FIG. 33, ITEMS THROUGH 36, FIG. 34, ITEMS 1 THROUGH 3 AND FIG. 35 ITEMS 1 THROUGH 6)	EA	1
33	1	XBOZZ		319062	89905	COVER, PLASTIC TRIPOD HEAD	EA	1
33	2	XBOZZ		319012	89905	PLATE, HEAD, TRIPOD	EA	1
33	3	XBOZZ		271991	89905	WASHER	EA	1
33	4	XBOZZ		319019	89905	SCREW, CENTRAL FIXING	EA	1
33	5	XBOZZ		319014	89905	JAW, CLAMP	EA	2
33	6	XBOZZ		312946	89905	NUT	EA	3
33	7	XBOZZ		271990	89905	BEARING	EA	6
33	8	XBOZZ		112537	89905	STRAP, LEATHER	EA	1
33	9	XBOZZ		346286	89905	SCREW	EA	2
33	10	XBOZZ		169625	89905	CLAMP, PLATE	EA	3
33	11	XBOZZ		323172	89905	SCREW, WING	EA	3

(1) ILLUSTRATION		(2)	(3)	(4)	(5)	(6)	(7)	(8)
(a) FIG. NO.	(b) ITEM NO.	SMR CODE	NATIONAL STOCK NUMBER	PART NUMBER	FCOM	DESCRIPTION  Usable On Code	U/M	QTY INC IN UNIT
33	12	XB02Z		319028	89905	BAND, CLAMP	EA	2
33	13	XB02Z		319025	89905	PLATE, STOP	EA	3
33	14	XB02Z		361106	89905	SCREW	EA	6
33	15	XB02Z		272091	89905	NUT	EA	3
33	16	XB02Z		319087	89905	SHOE	EA	3
33	17	XB02Z		323373	89905	WASHER	EA	3
33	18	XB02Z		235978	89905	SCREW	EA	3
33	19	XB02Z		319047	89905	LEG, WOODEN	EA	33
33	20	XB02Z		315010	89905	STRAP, CARRYING	EA	1
33	21	XB02Z		319034	89905	LEGHOLDER	EA	1
33	22	XB02Z		319016	89905	JAW, CLAMP	EA	1
33	23	XB02Z		235978	89905	SCREW	EA	3
33	24	XB02Z		319035	89905	LEGHOLDER	EA	2
33	25	XB02Z		271993	89905	WEDGE	EA	3
33	26	XB02Z		208818	89905	SCREW	EA	3
33	27	XB02Z		350956	89905	BRACKET	EA	6
33	28	XB02Z		319042	89905	DOWEL, WOODEN	EA	3
33	29	XB02Z		319040	89905	LEG, WOODEN	EA	3
33	30	XB02Z		265535	89905	SCREW	EA	6
33	31	XB02Z		235976	89905	SCREW	EA	3
33	32	XB02Z		319023	89905	PLATE, STOP	EA	3
33	33	XB02Z		319031	89905	BAND, CLAMP	EA	1
33	34	XB02Z		346285	89905	SCREW	EA	4
33	35	XB02Z		284791	89905	BRACKET	EA	2
33	36	XB02Z		161337	89905	RIVET	EA	4
34	1	XB02Z		319164	89905	CASE, ACCESSORY	EA	1
34	2	XB02Z		166494	89905	WRENCH	EA	1
34	3	PA00Z		319010	89905	PLUMB BOB ASSY (FIG. 35, ITEMS 1 THROUGH 6)	EA	1
35	1	XB02Z		352825	89905	RING	EA	1
35	2	XB02Z		269587	89905	STRING, 2.3 M	EA	1
35	3	XB02Z		296630	89905	SOCKET, BAYONET	FT	1

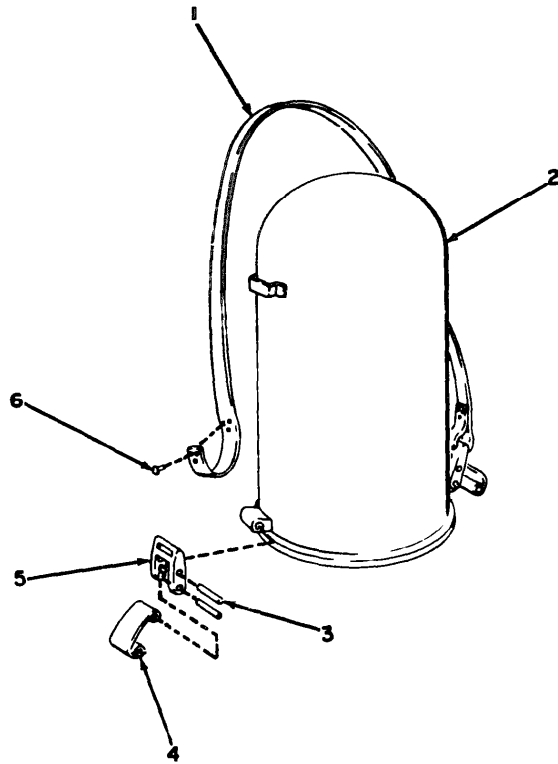


(1) ILLUSTRATION		(2)	(3)	(4)	(5)	(6)	(7)	(8)
(a) FIG. NO.	(b) ITEM NO.	SNR CODE	NATIONAL STOCK NUMBER	PART NUMBER	FSCM	DESCRIPTION  Usable On Code	U/M	QTY INC IN UNIT
35	4	XBOZZ		352916	89905	SLIDE, ADJUSTER	EA	1
35	5	XBOZZ		296670	89905	NUT	EA	1
35	6	XAOZZ		296672	89905	PLUMB BOB	EA	1



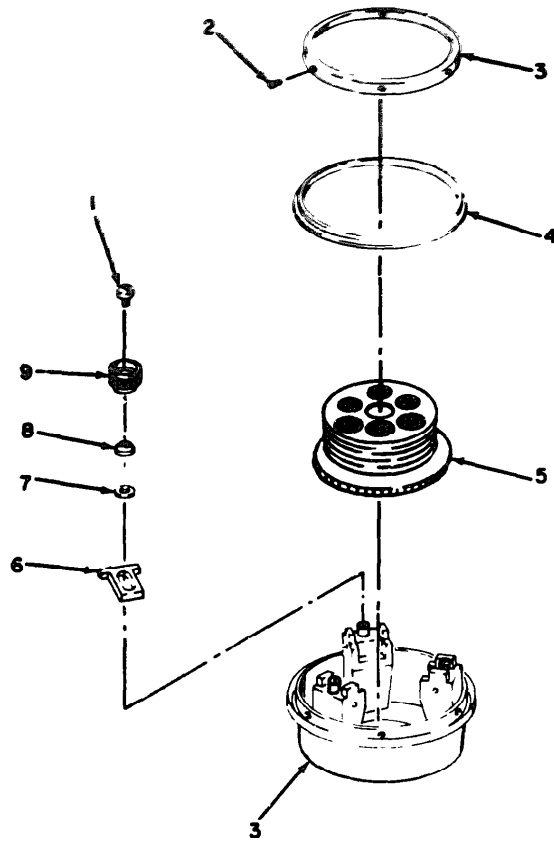
TS008826

Figure 1. Shipping Case and Haversack



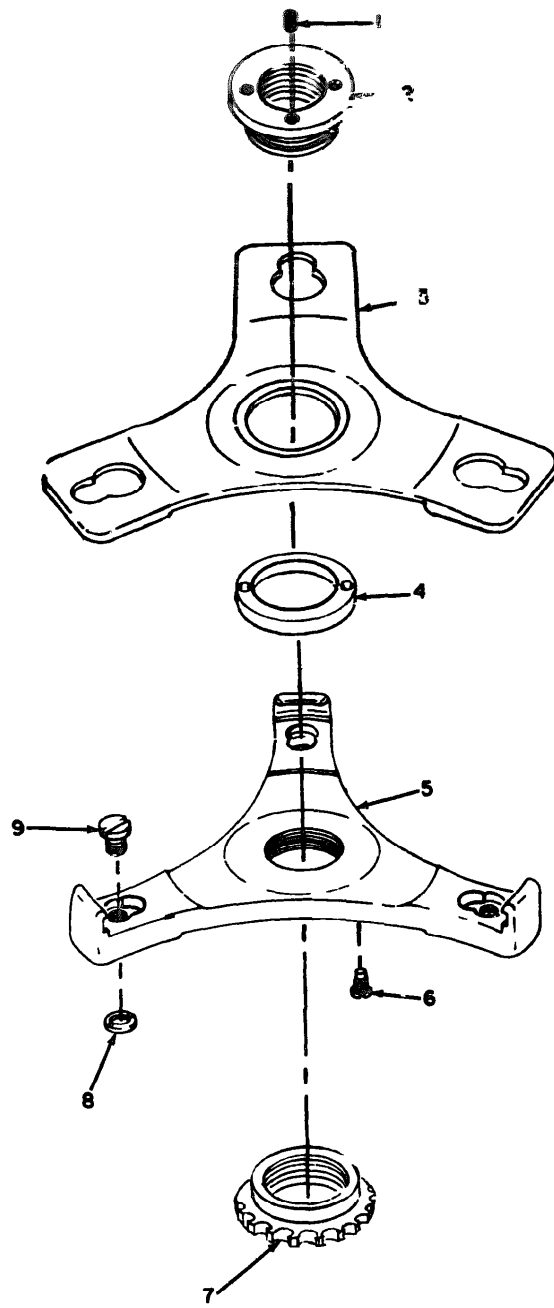
TS008827

Figure 2. Metal Carrying Case



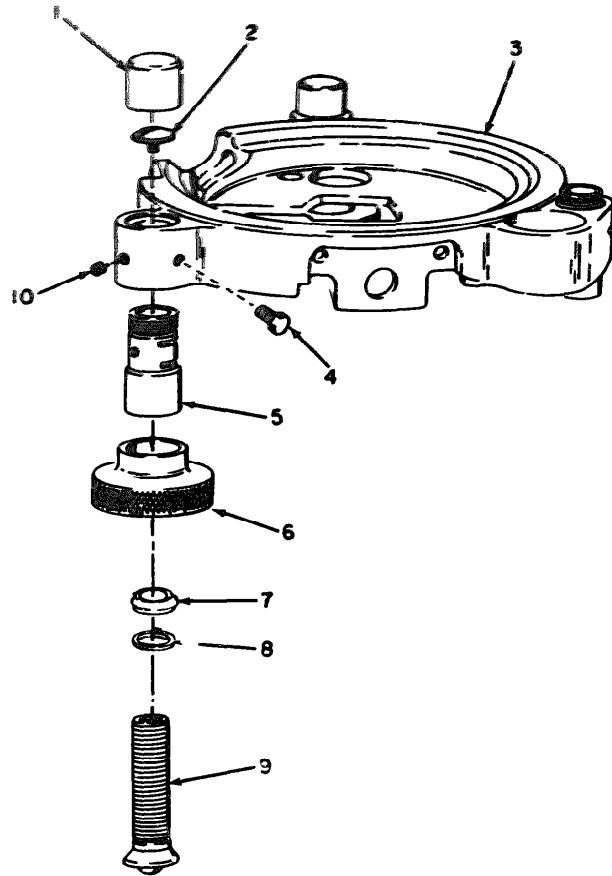
TS008828

Figure 3. Base



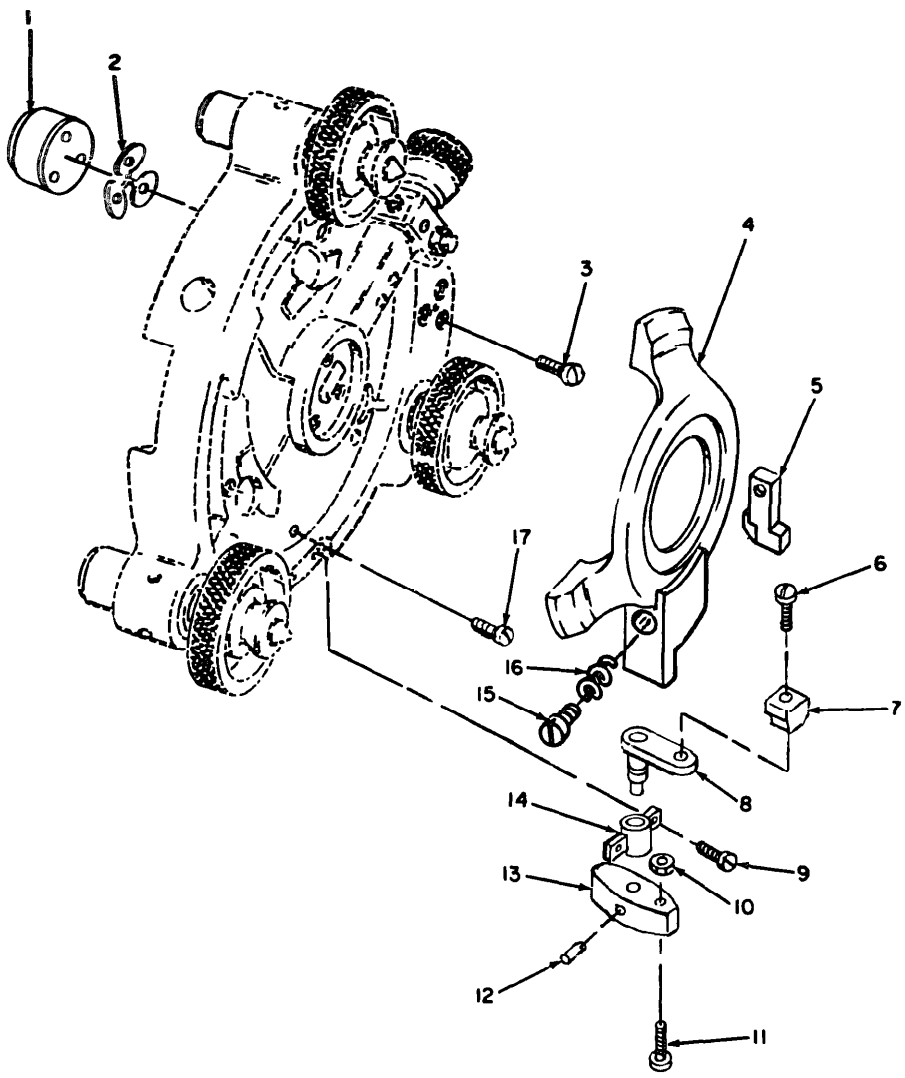
TS008829

Figure 4. Base Plate



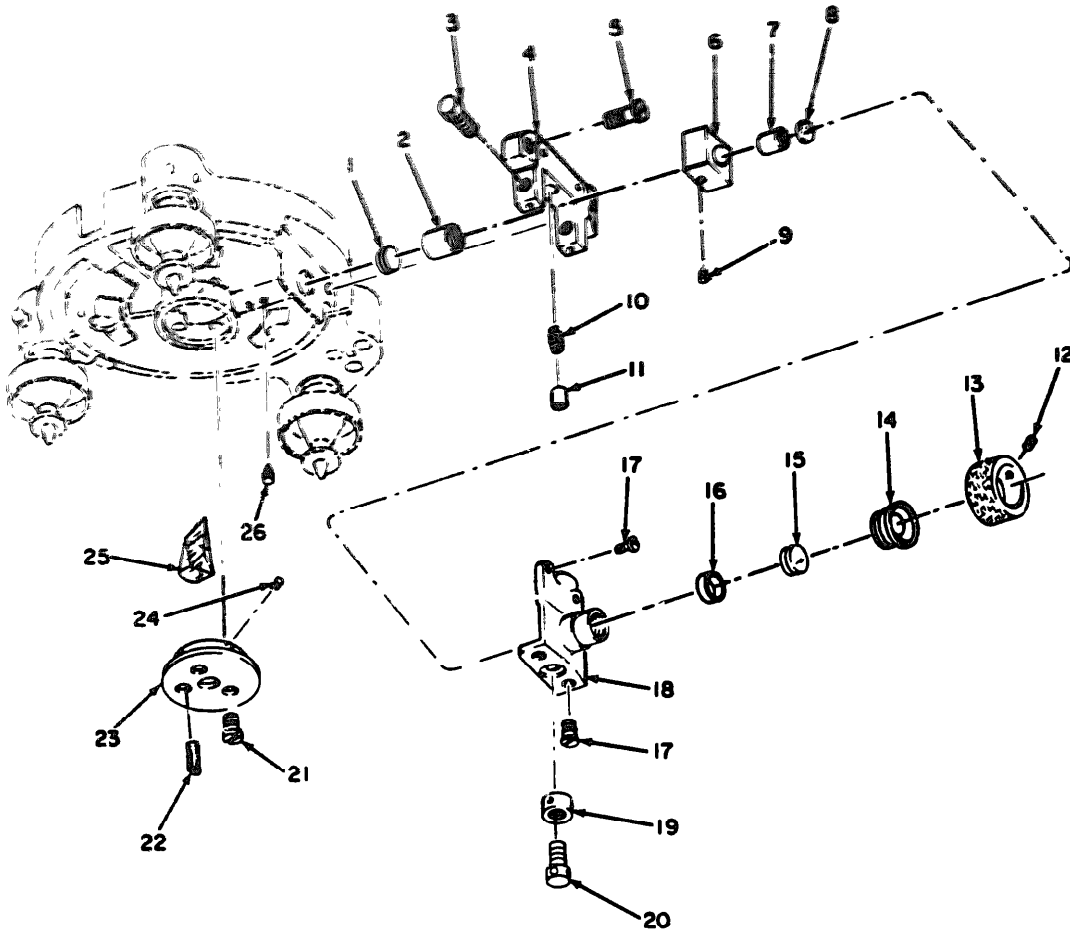
TS006830

Figure 5. Footscrew



TS008831

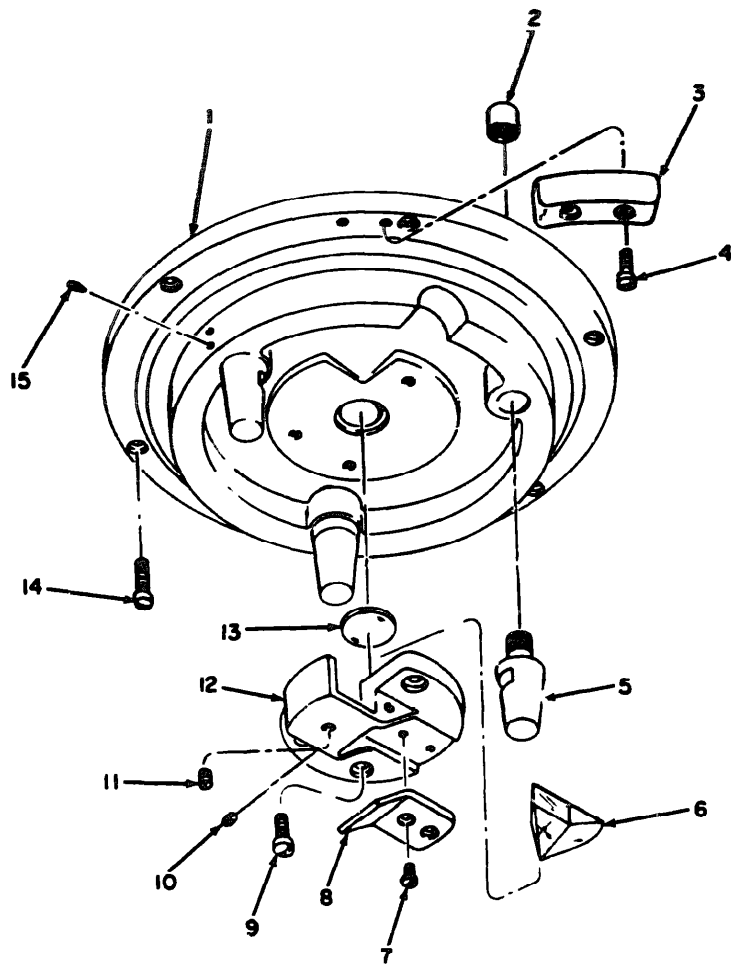
Figure 6. Locking Plate and Lock Knob



TS008832

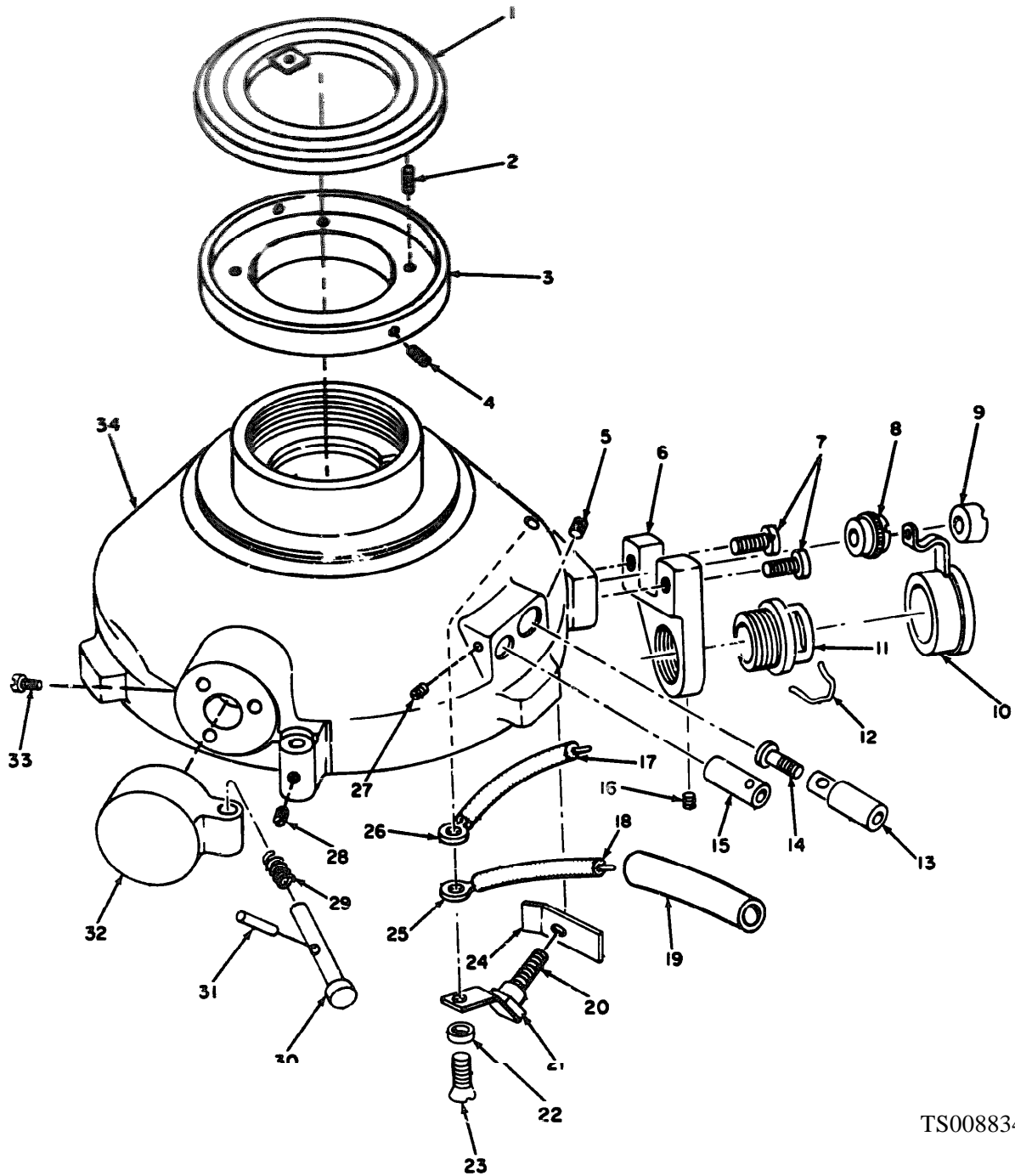
Figure 7. Optical Plummet Eyepiece and Objective, and Mounting Flange





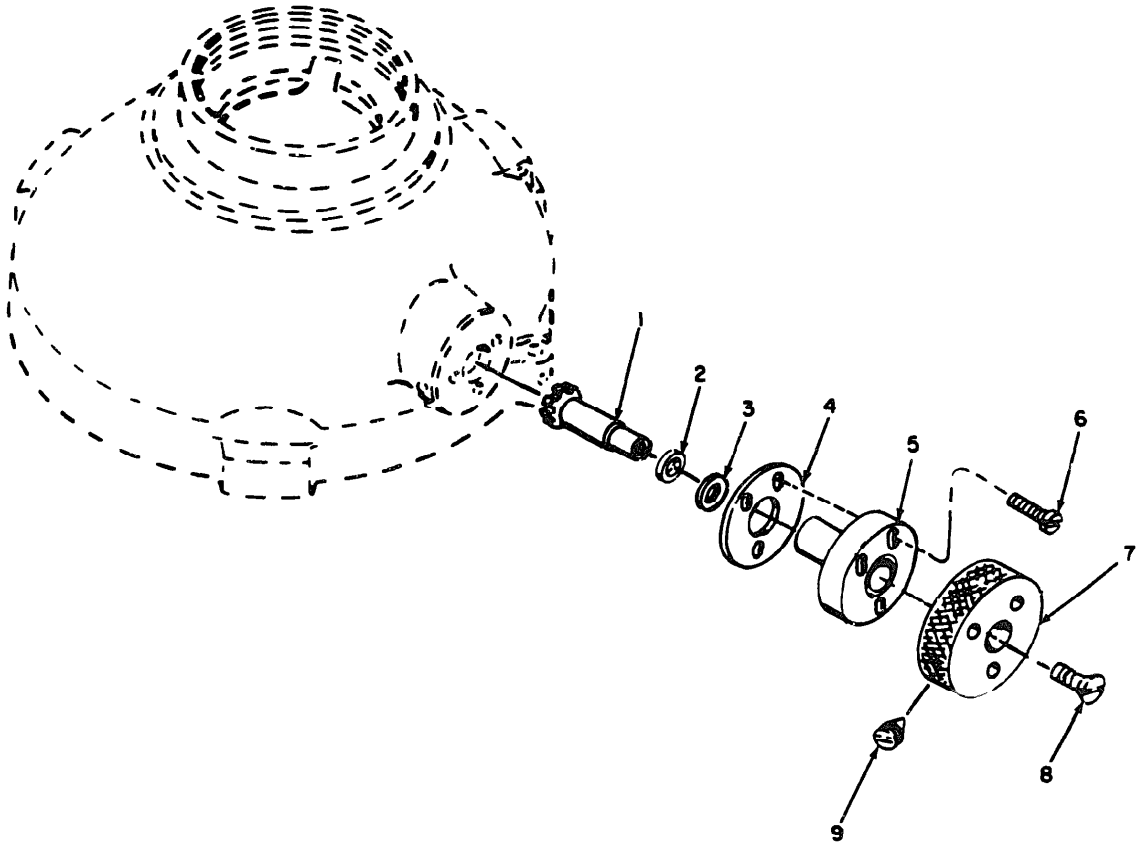
TS008833

Figure 8. Base Cover



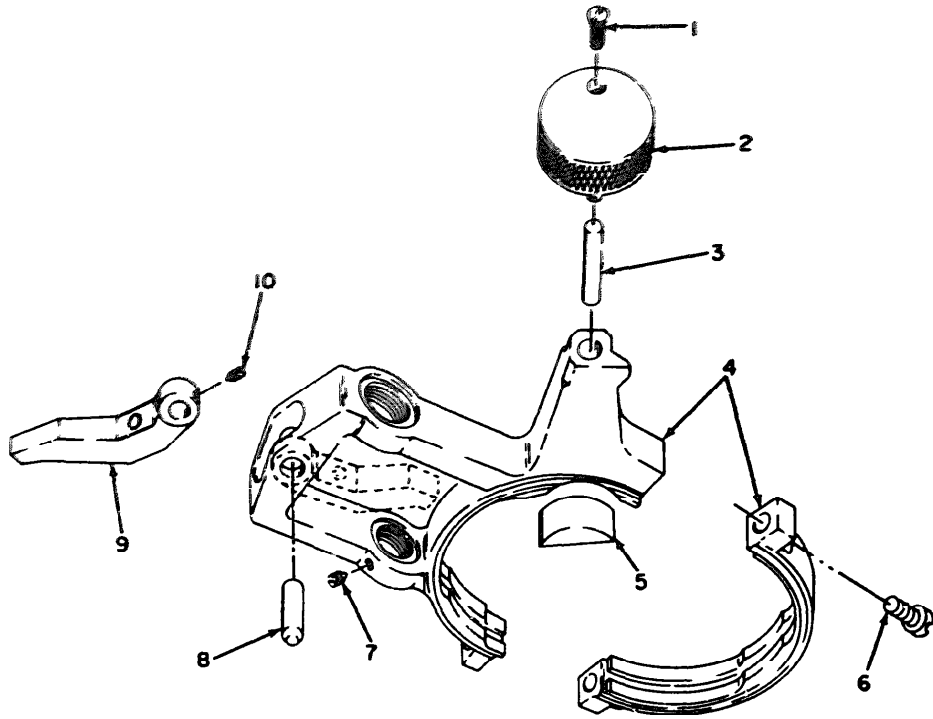
TS008834

Figure 9. Base Housing, Illumination Flange, and Contact Ring



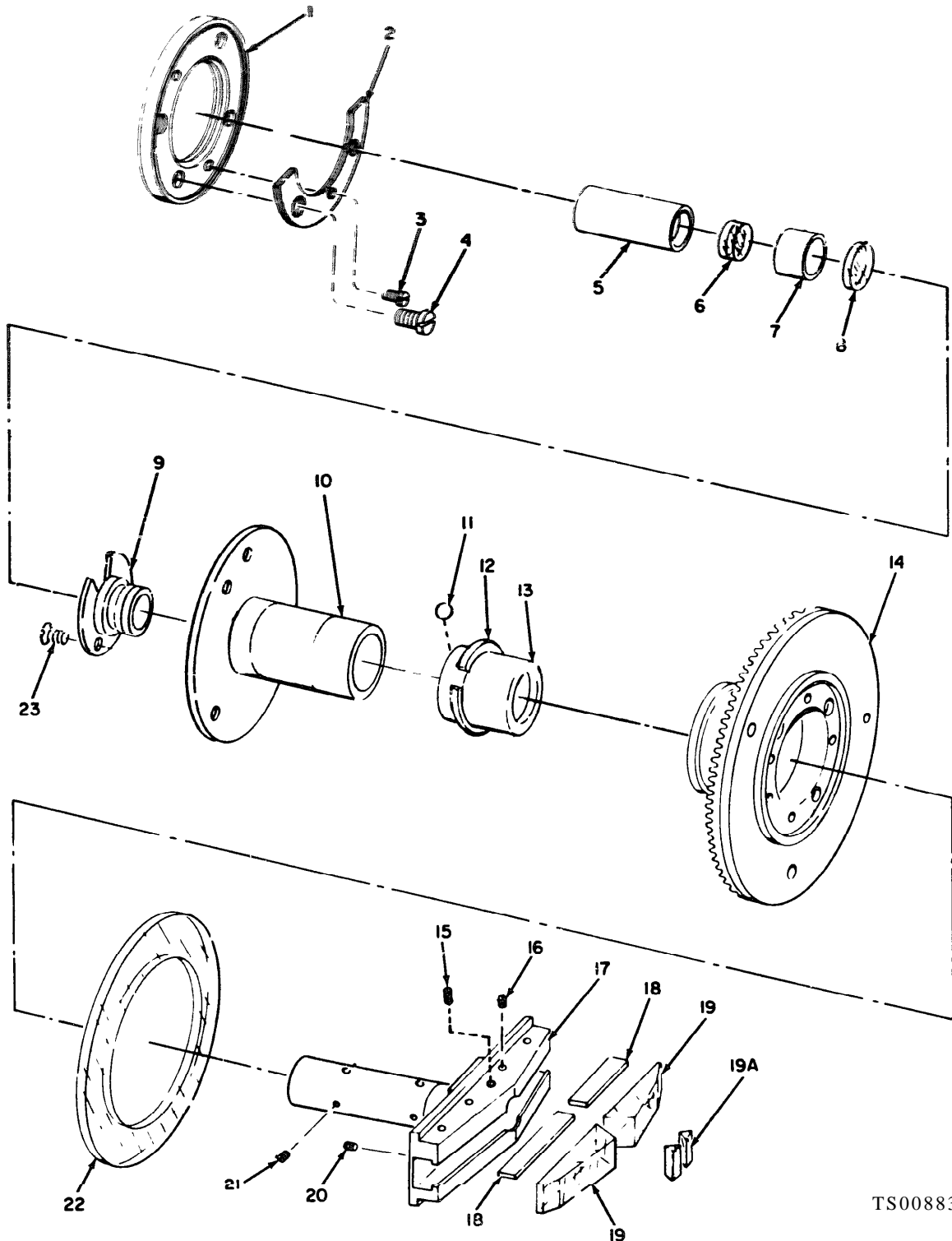
TS008835

Figure 10. Horizontal Circle Drive



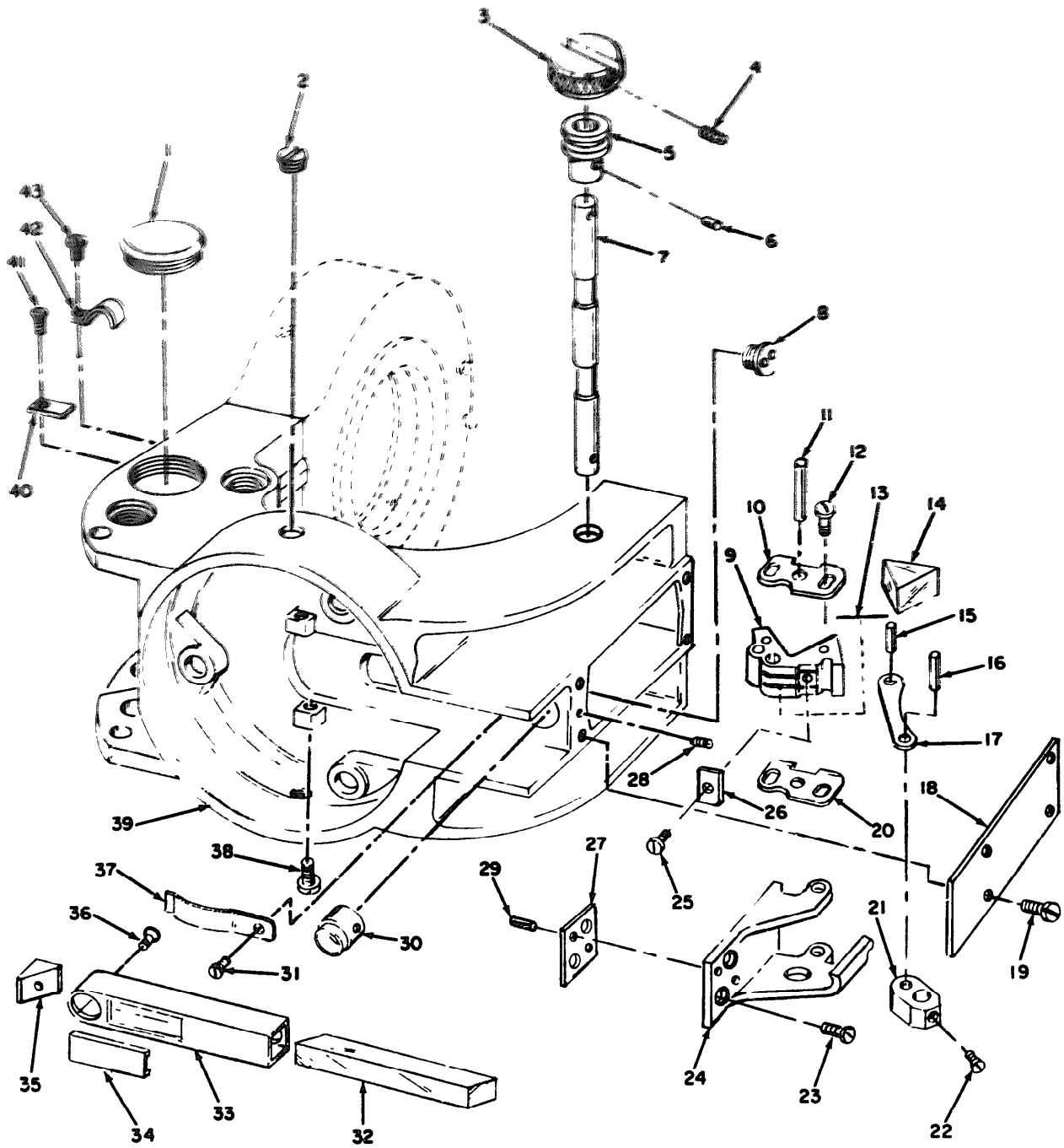
TS008836

Figure 11. Horizontal Clamp



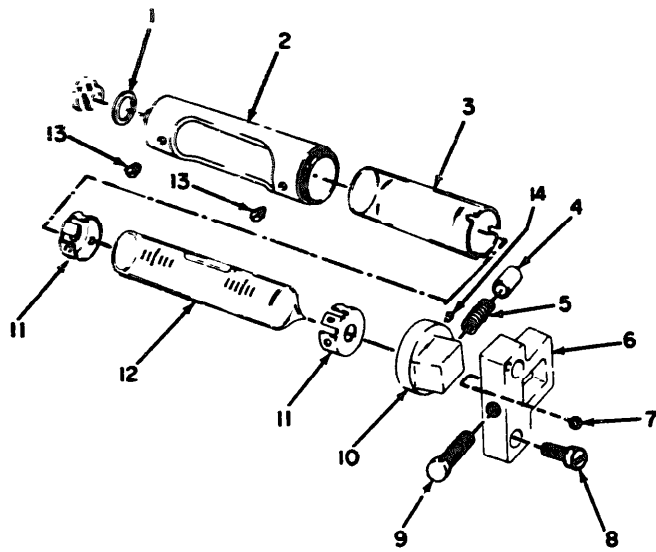
TS008837

Figure 12. Vertical Axis and Horizontal Circle Objectives



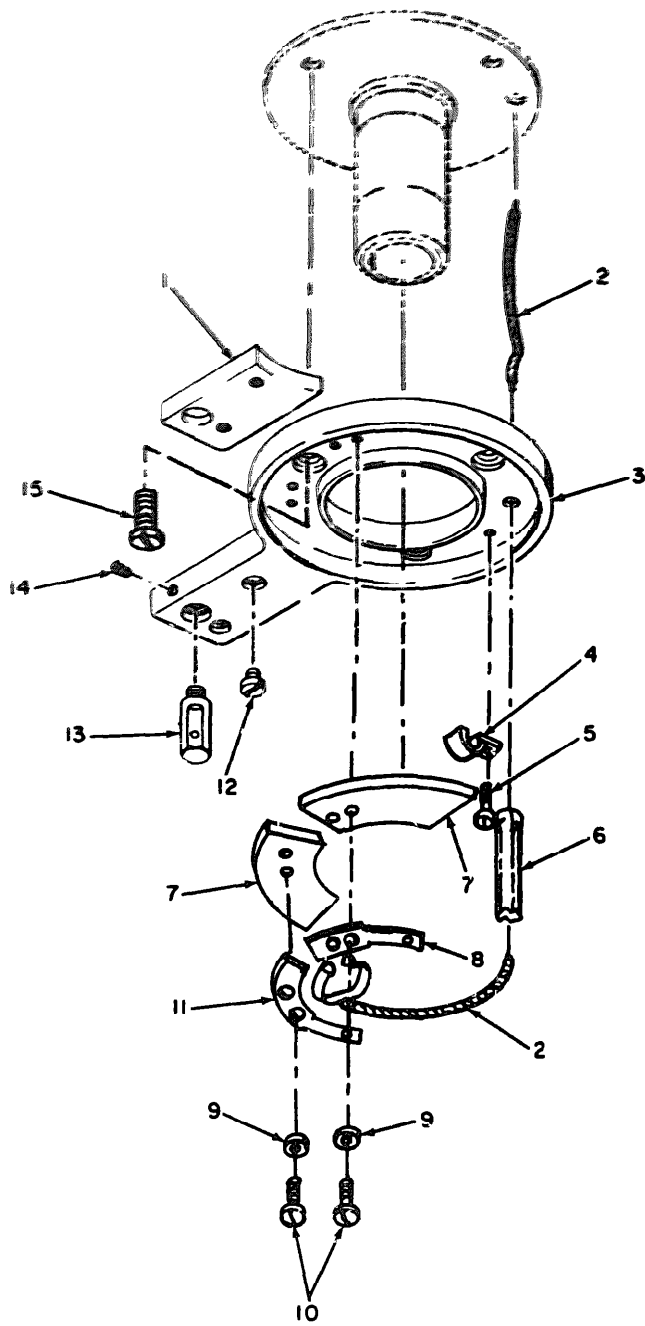
TS008838

Figure 13. U-Standard



TS008839

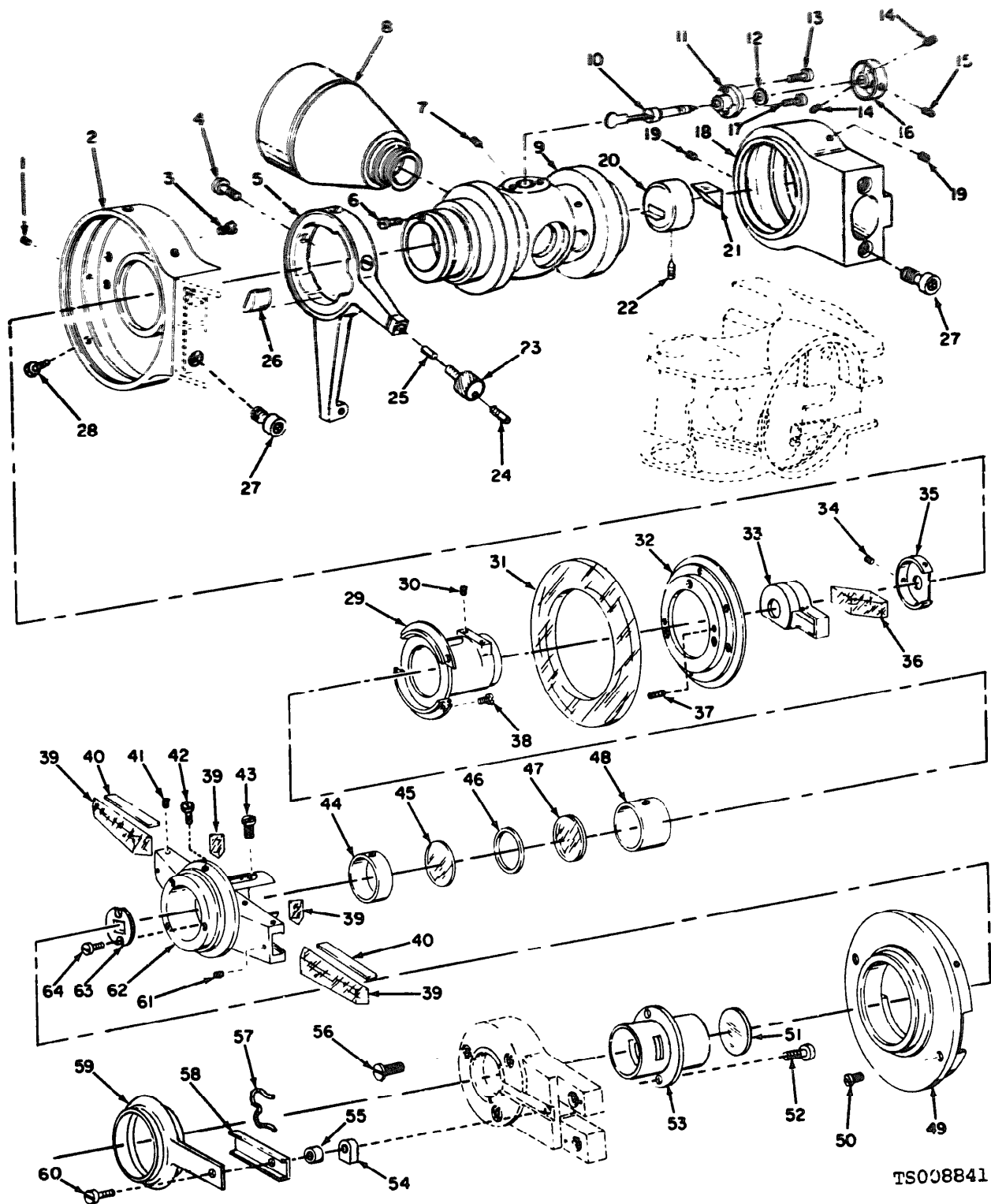
Figure 14. Plate Level



TS008840

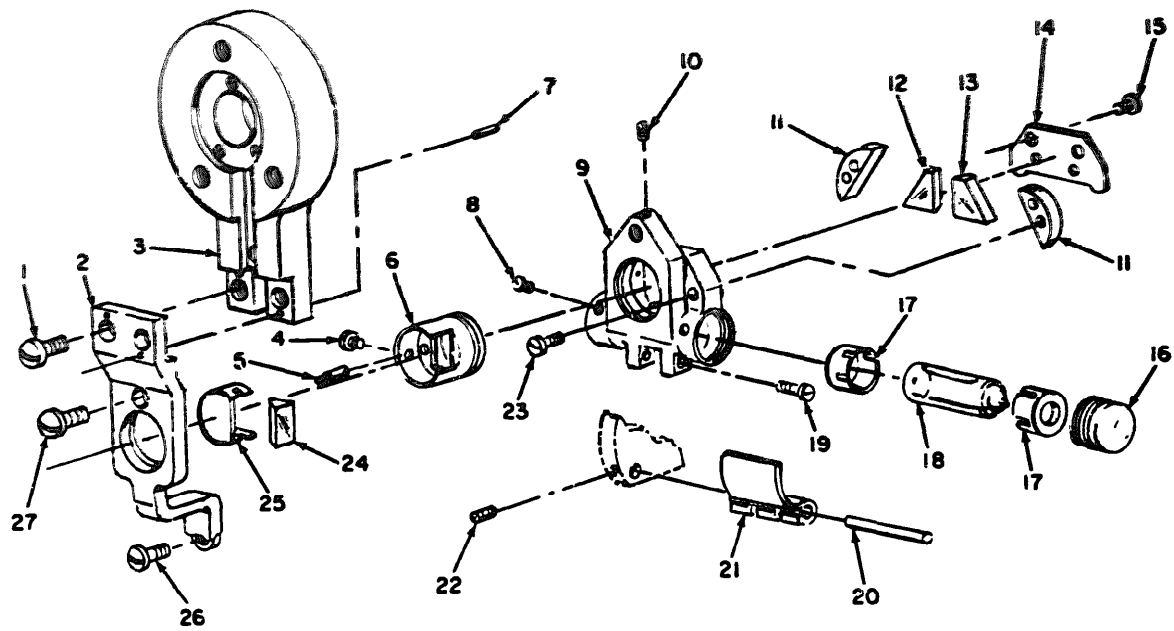
Figure 15. Connecting Flange





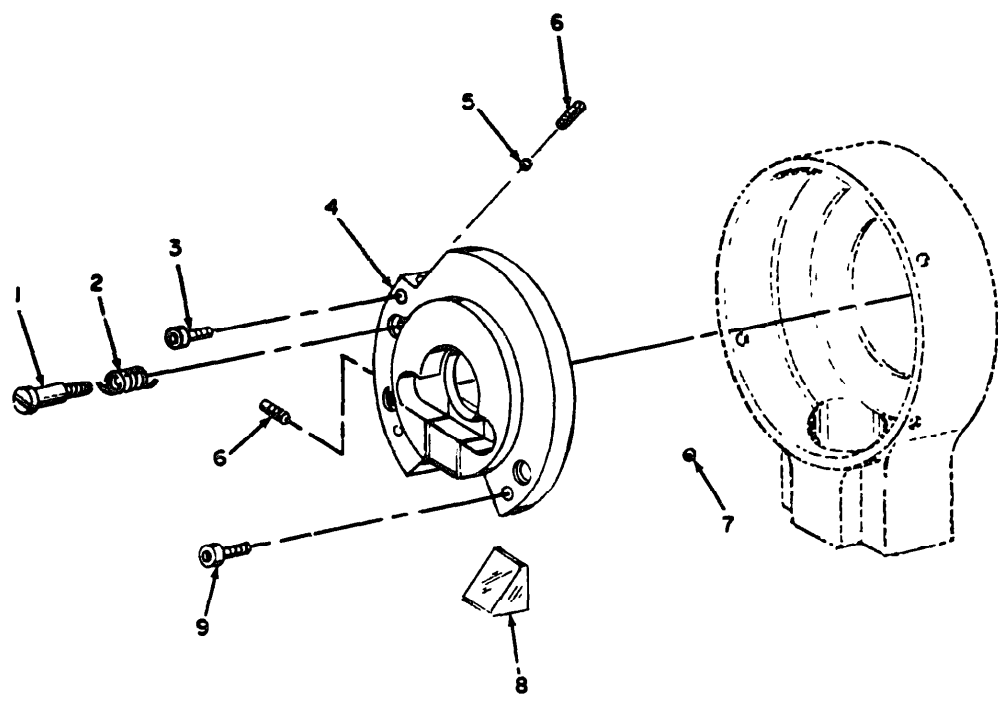
TS008841

Figure 16. Telescope Axis, Vertical Clamp, Reticule Illumination, Collimation Assembly and Vertical Circle Objectives



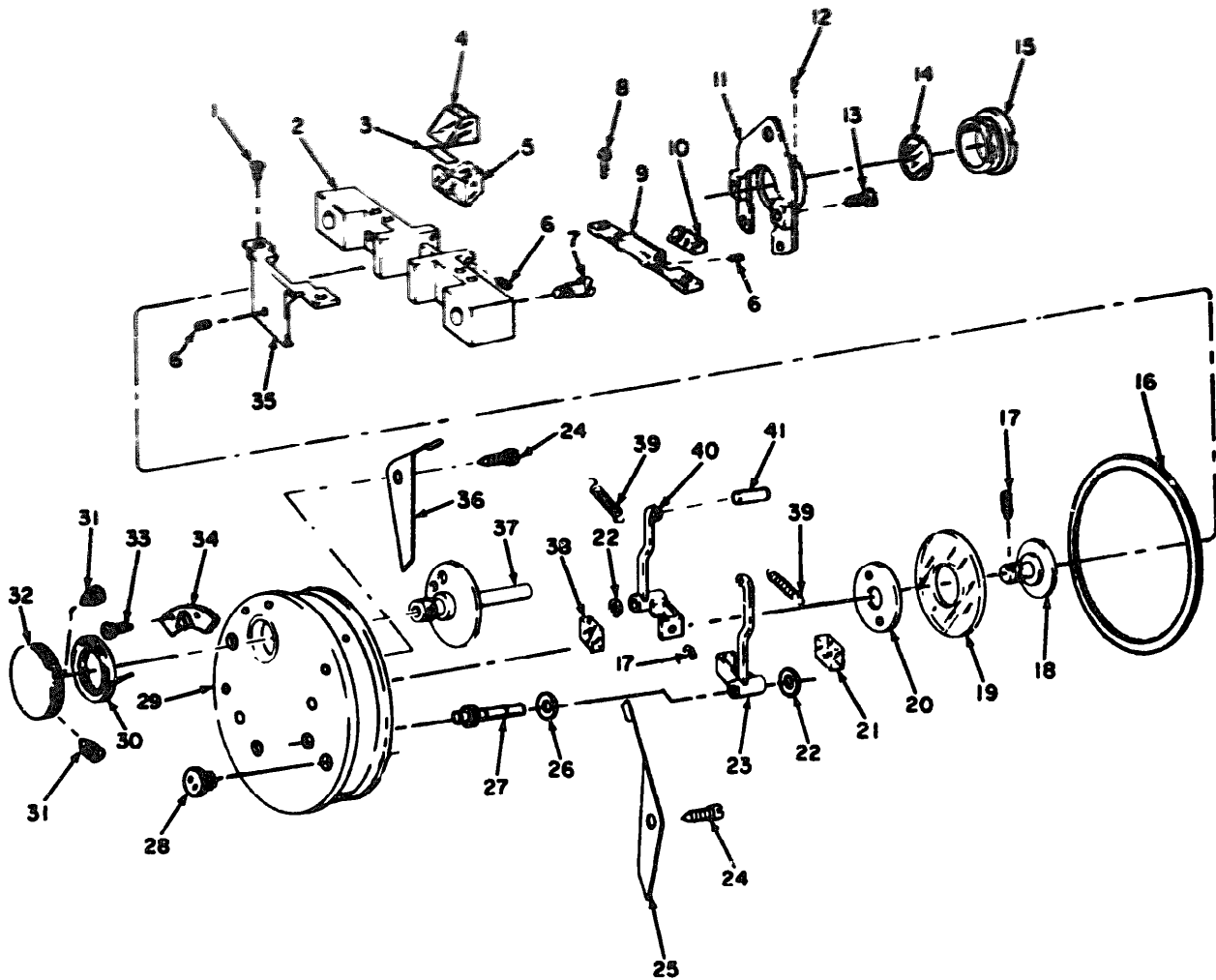
TS008842

Figure 17. Vertical Collimation Level



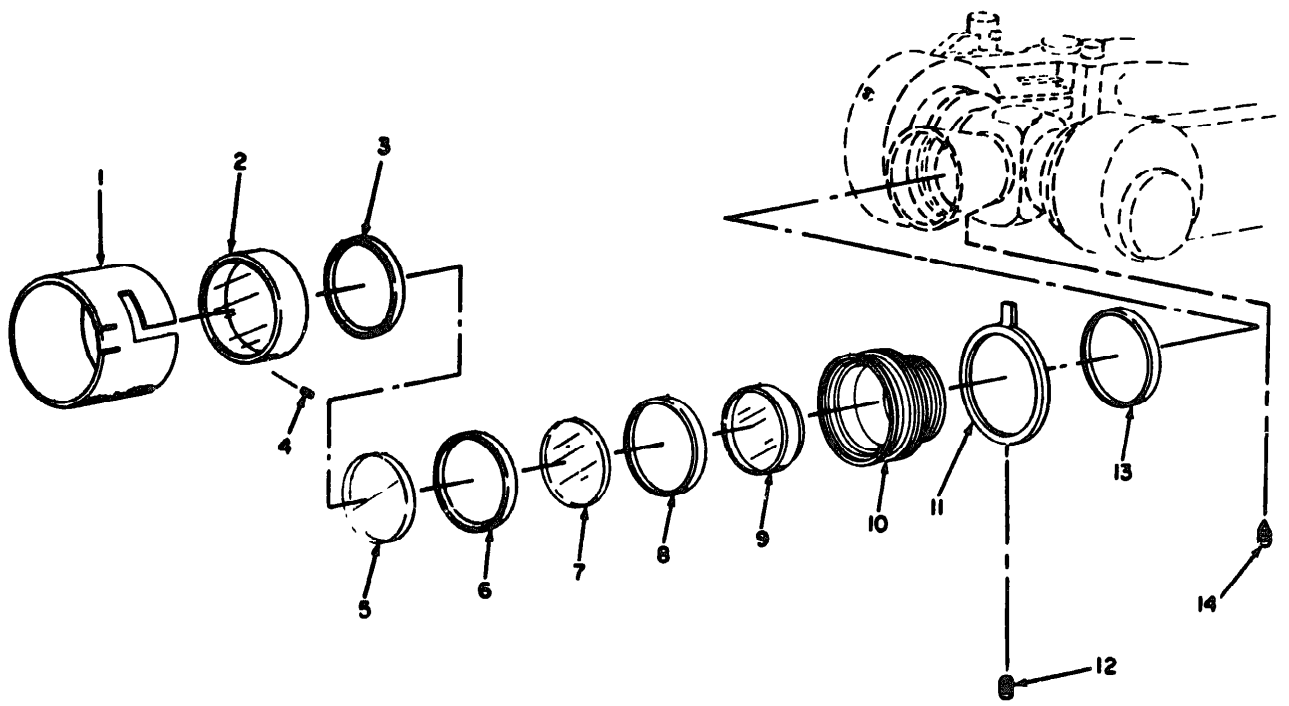
TS008843

Figure 18. Adjusting Prism



TS008844

Figure 19. Optical Micrometer



TS008845

Figure 20. Telescope Objective

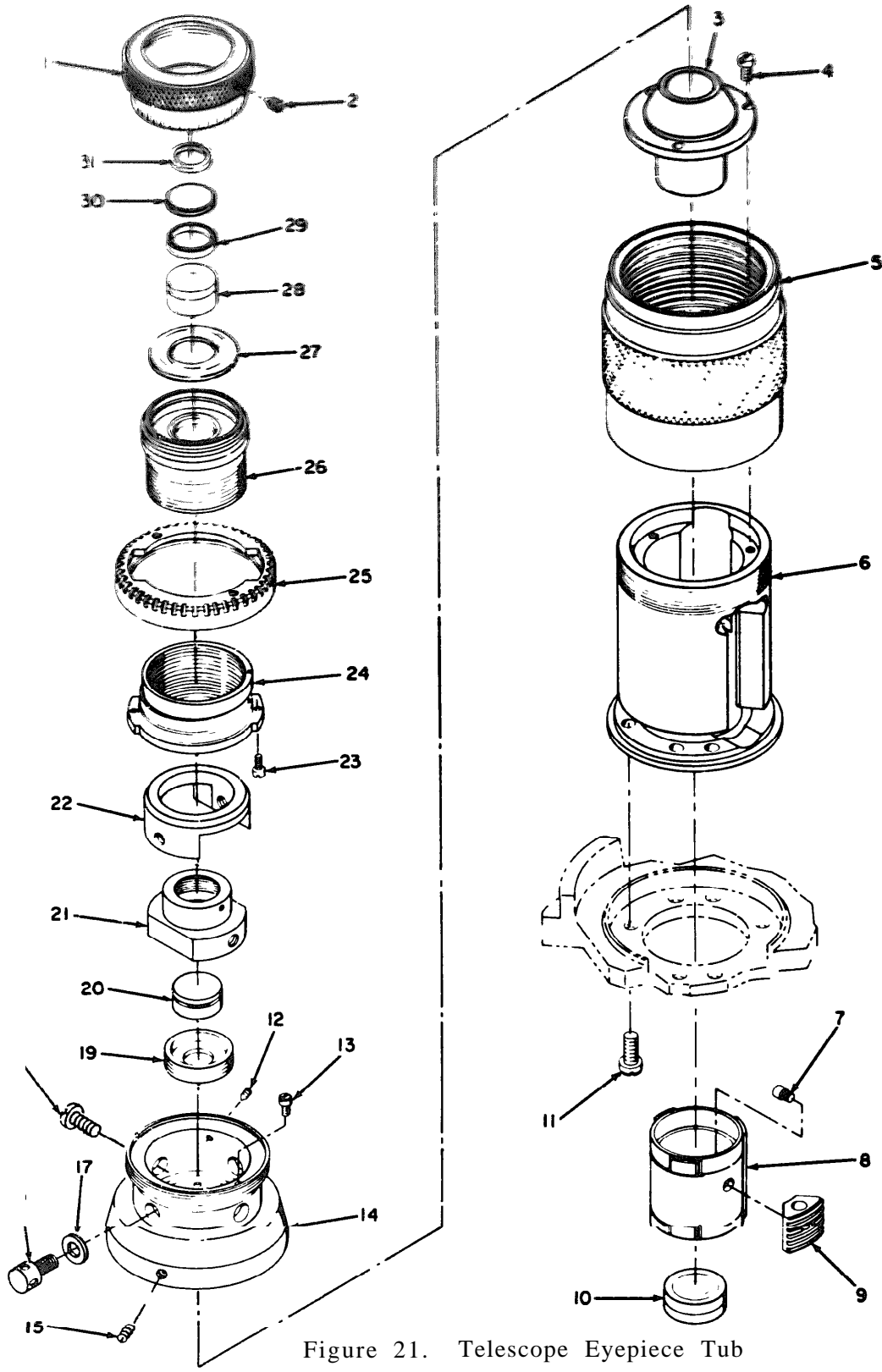
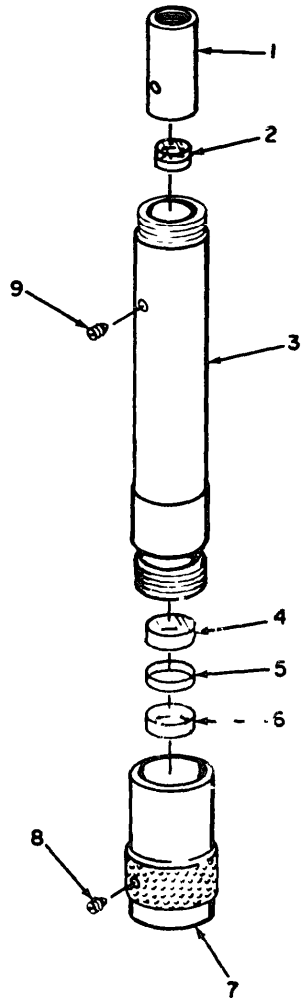


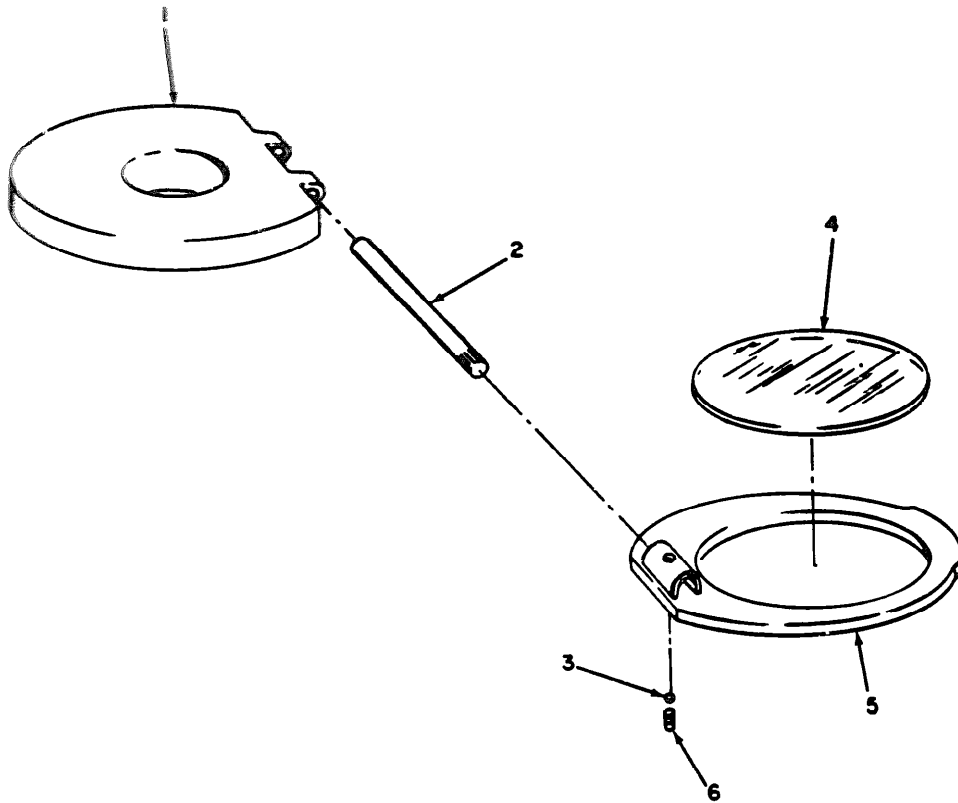
Figure 21. Telescope Eyepiece Tub

TS008846



TS008847

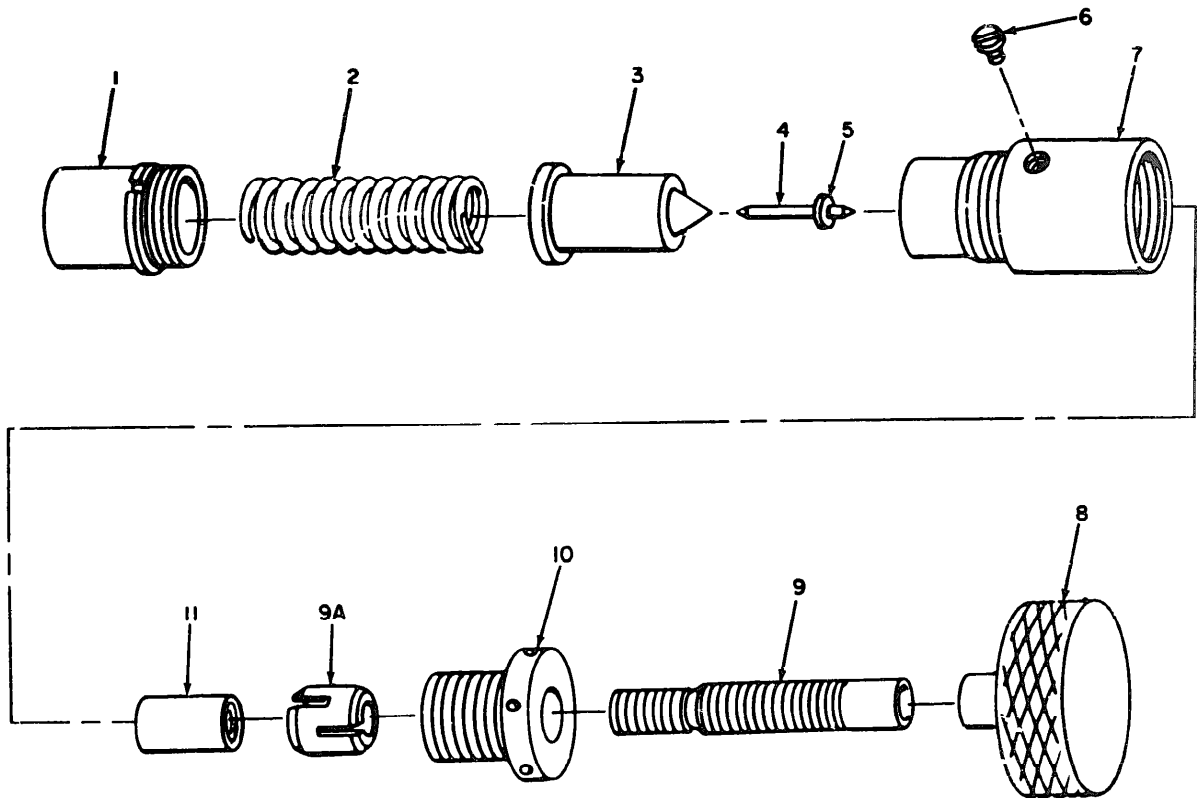
Figure 22. Reading Microscope



TS008848

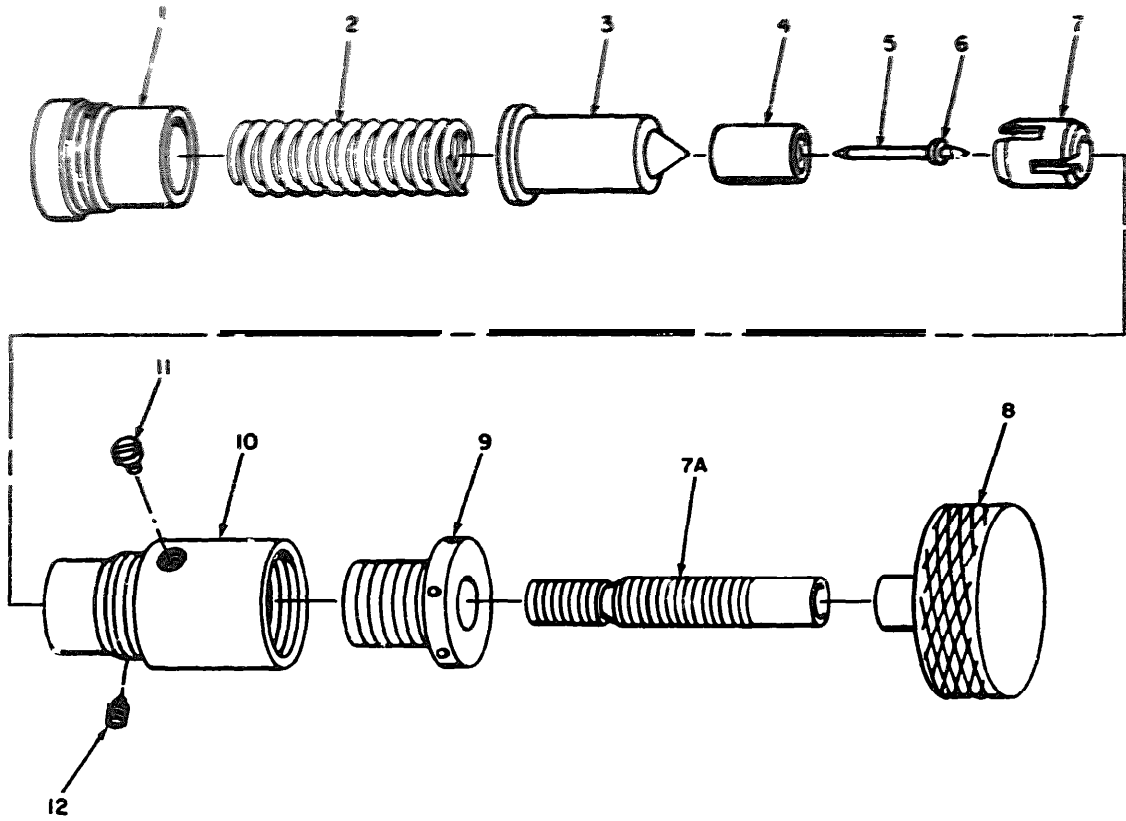
Figure 23. Illumination Mirror





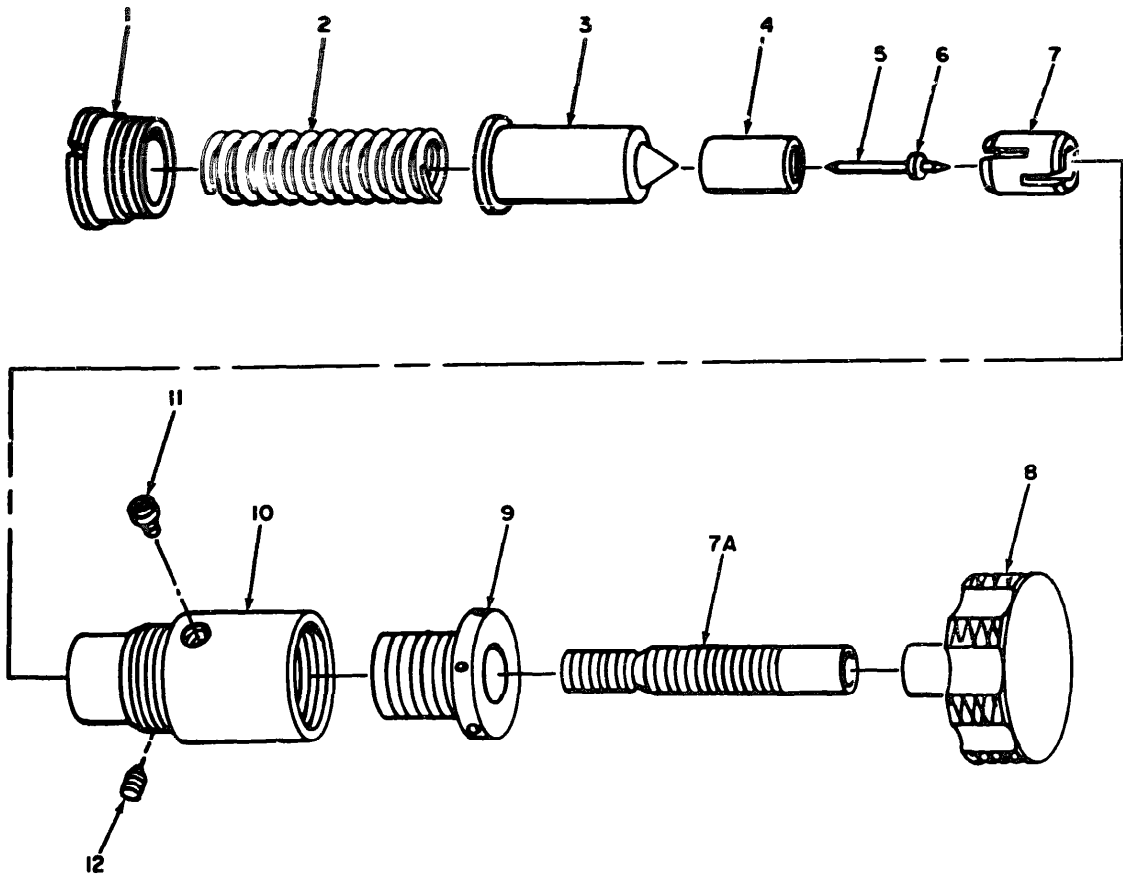
TS008849

Figure 24. Horizontal Slow Motion Screw



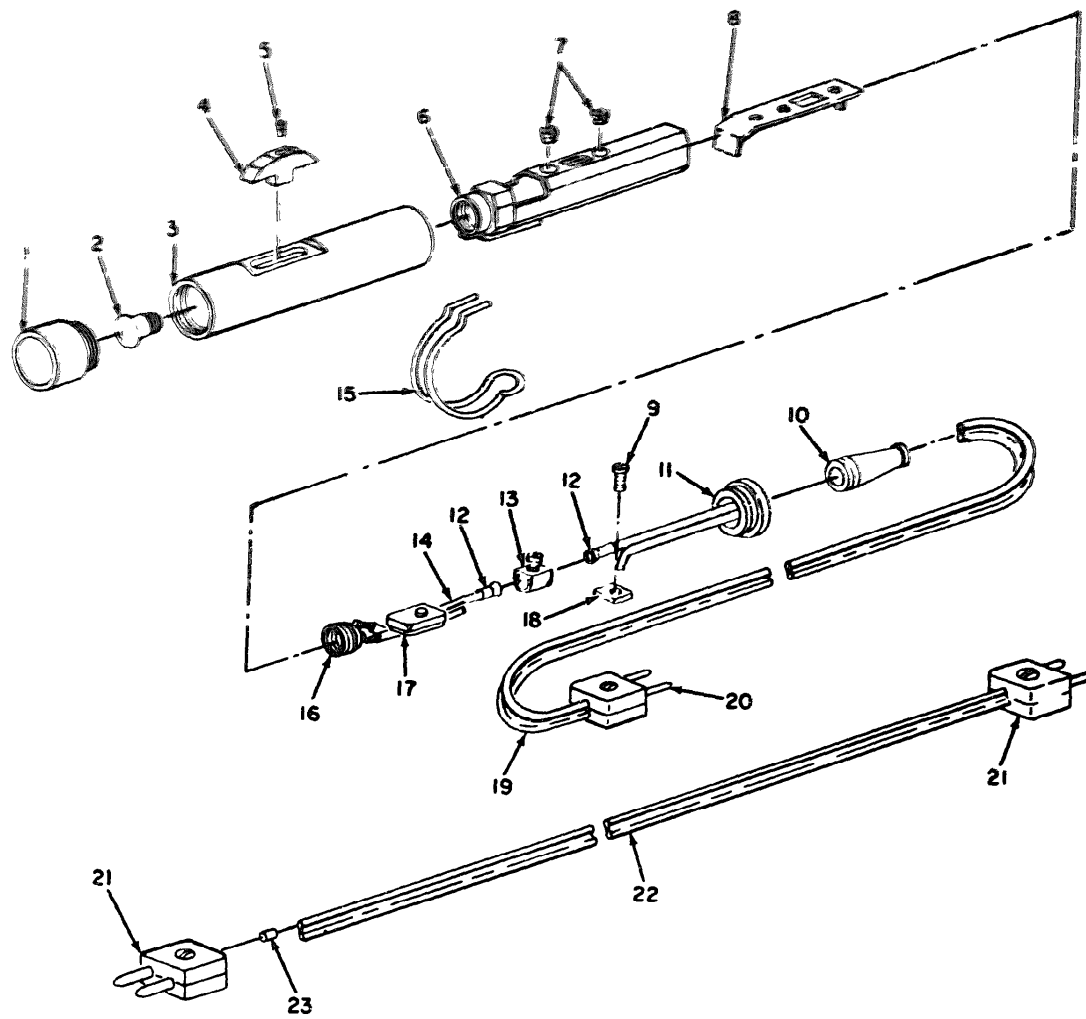
TS008850

Figure 25. Vertical Slow Motion Screw



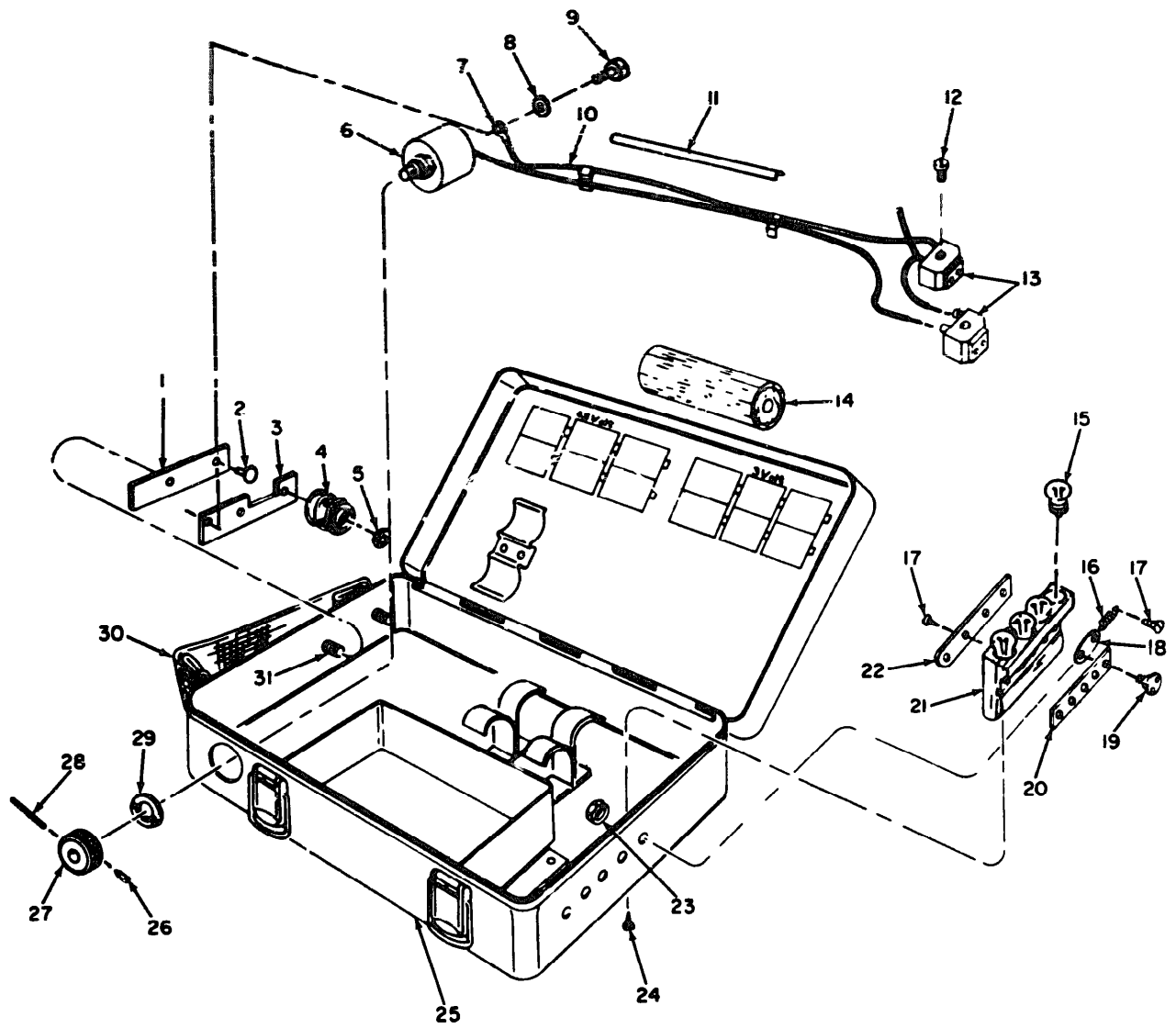
TS008851

Figure 26. Collimation Slow Motion Screw



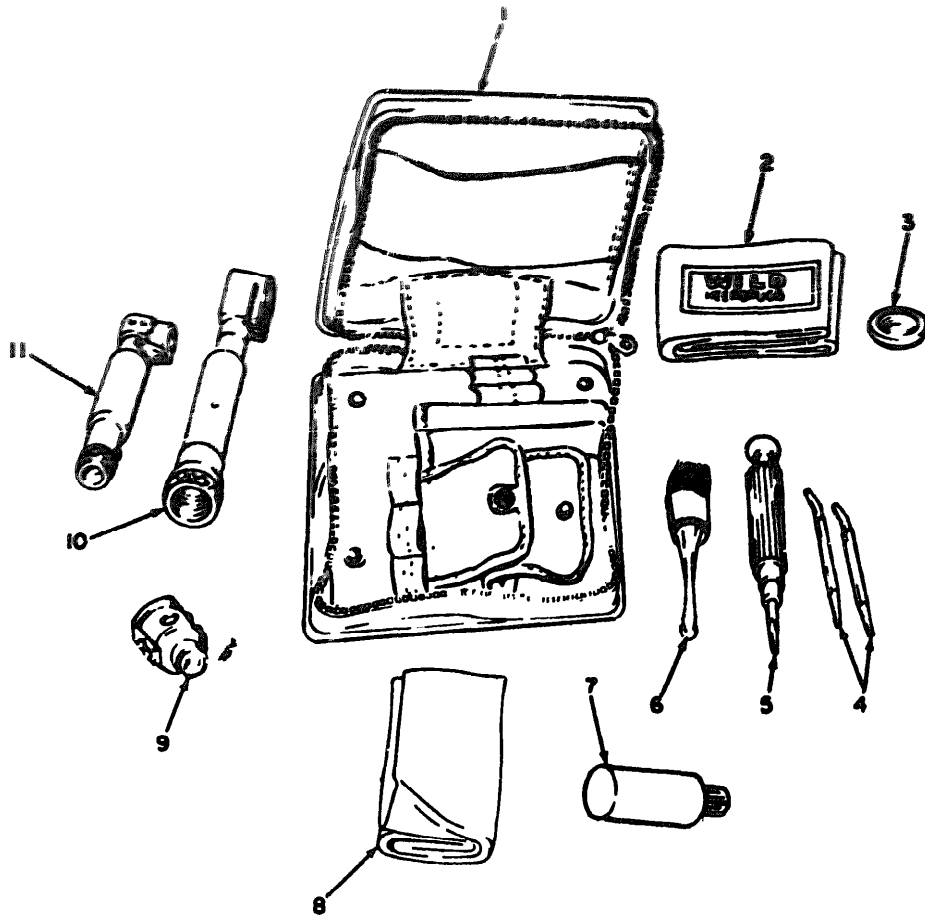
TS008852

Figure 27. Handlamp and Cable



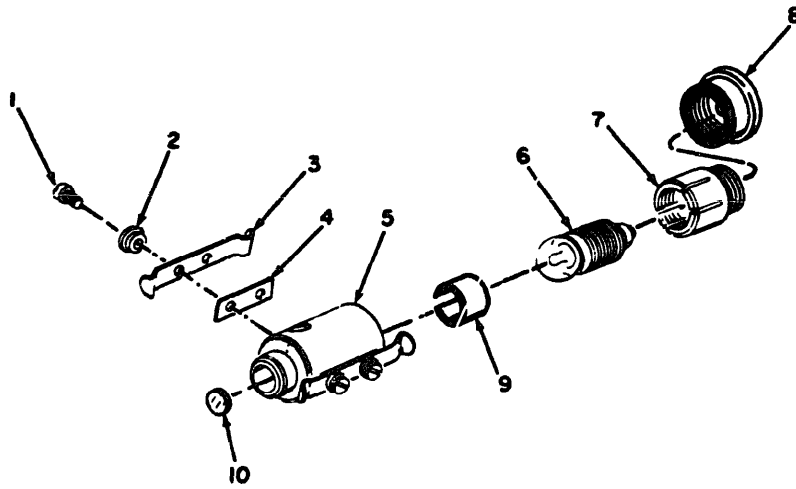
TS008853

Figure 28. Battery Box



TS008854

Figure 29. Accessory Case, Filled



TS008855

Figure 30. Electric Lamp Fitting

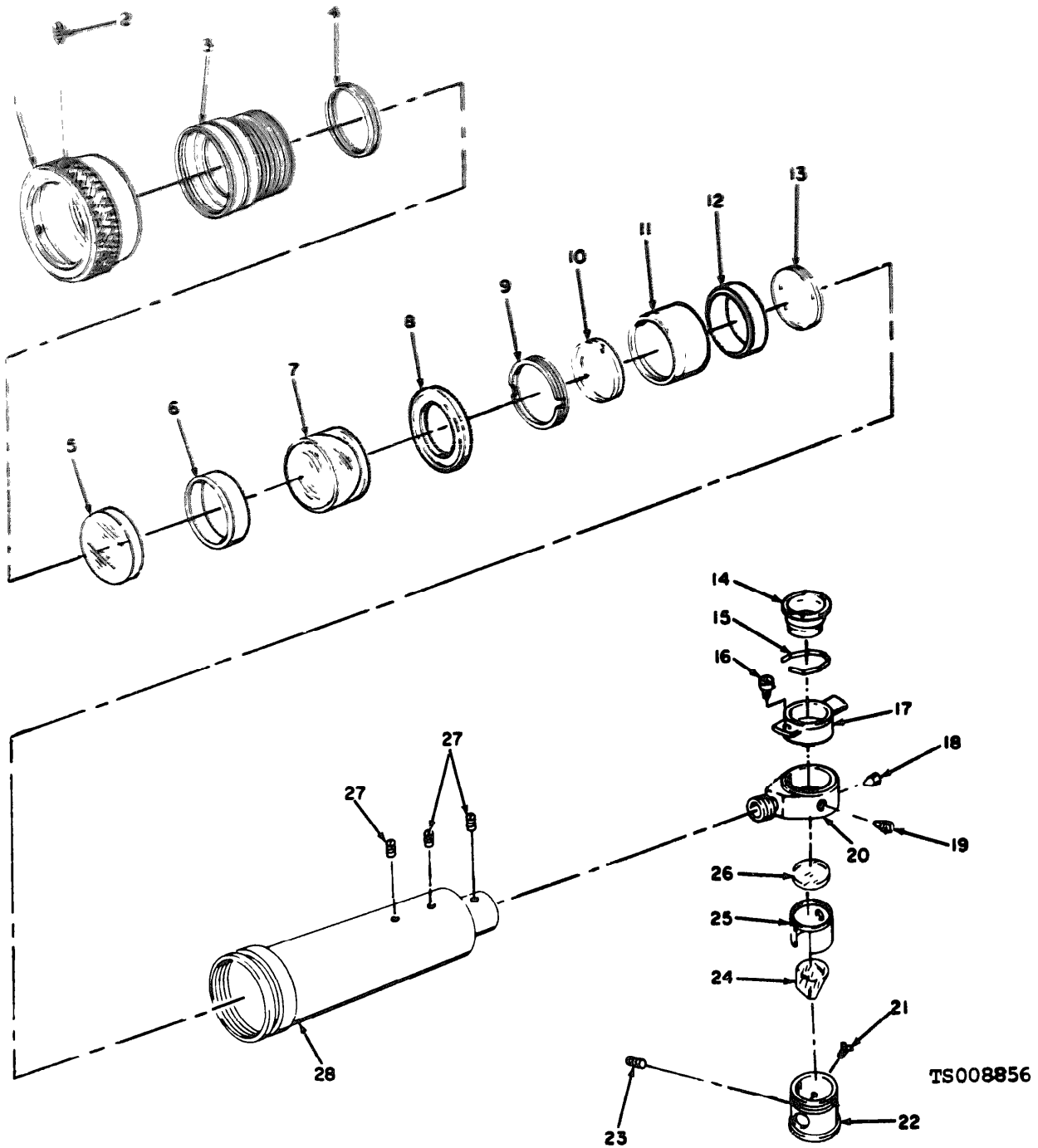
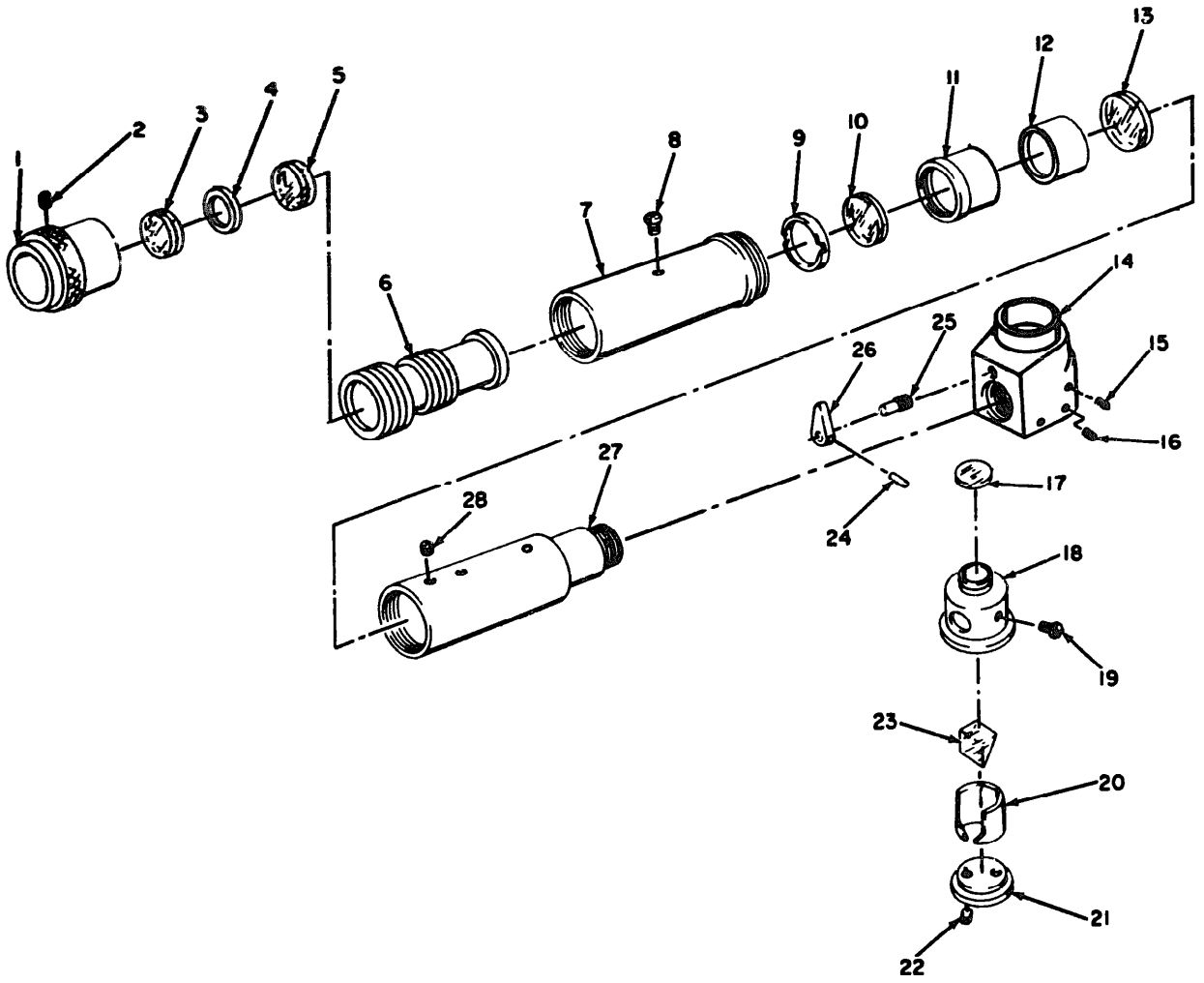


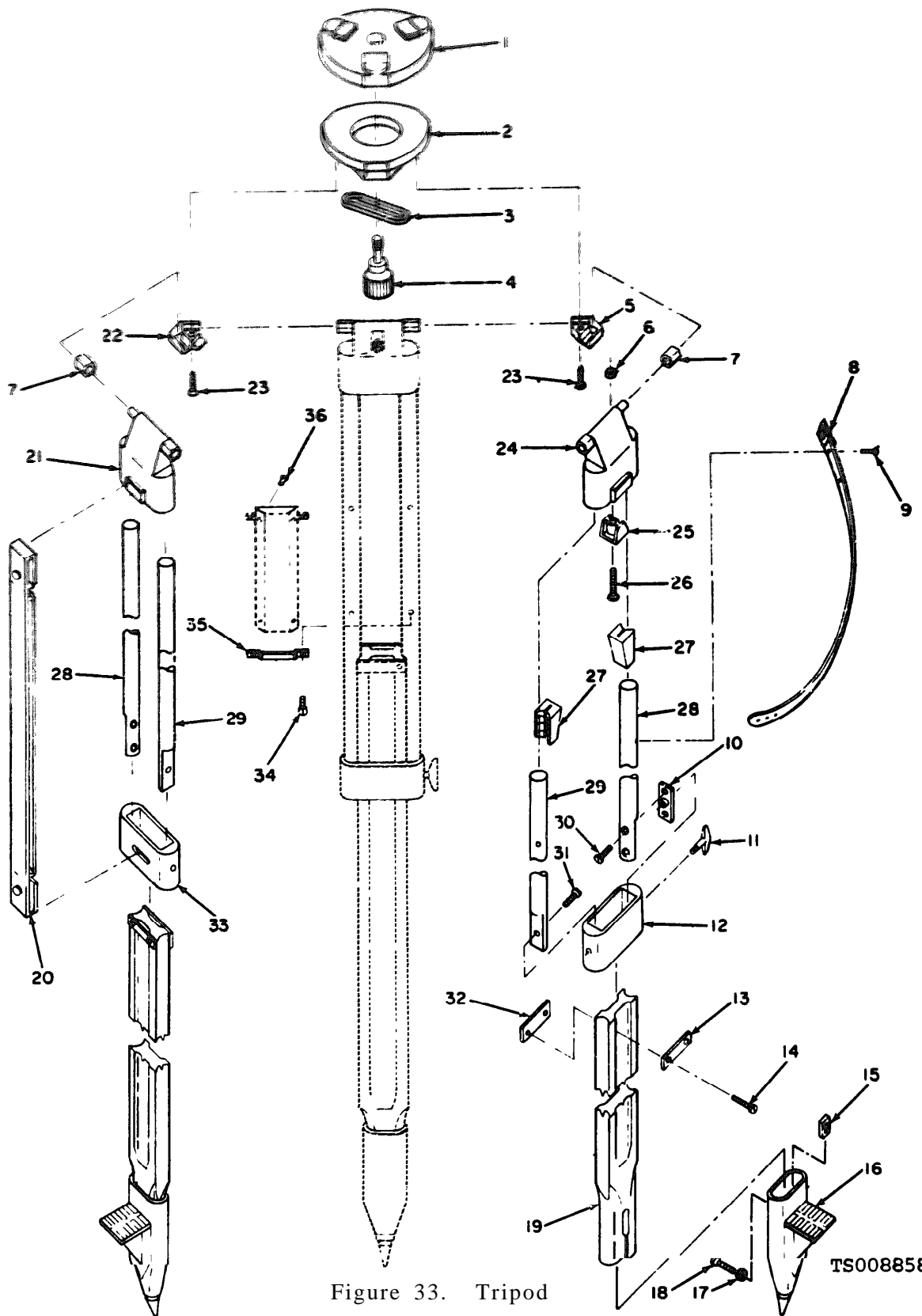
Figure 31. Diagonal Telescope Eyepiece

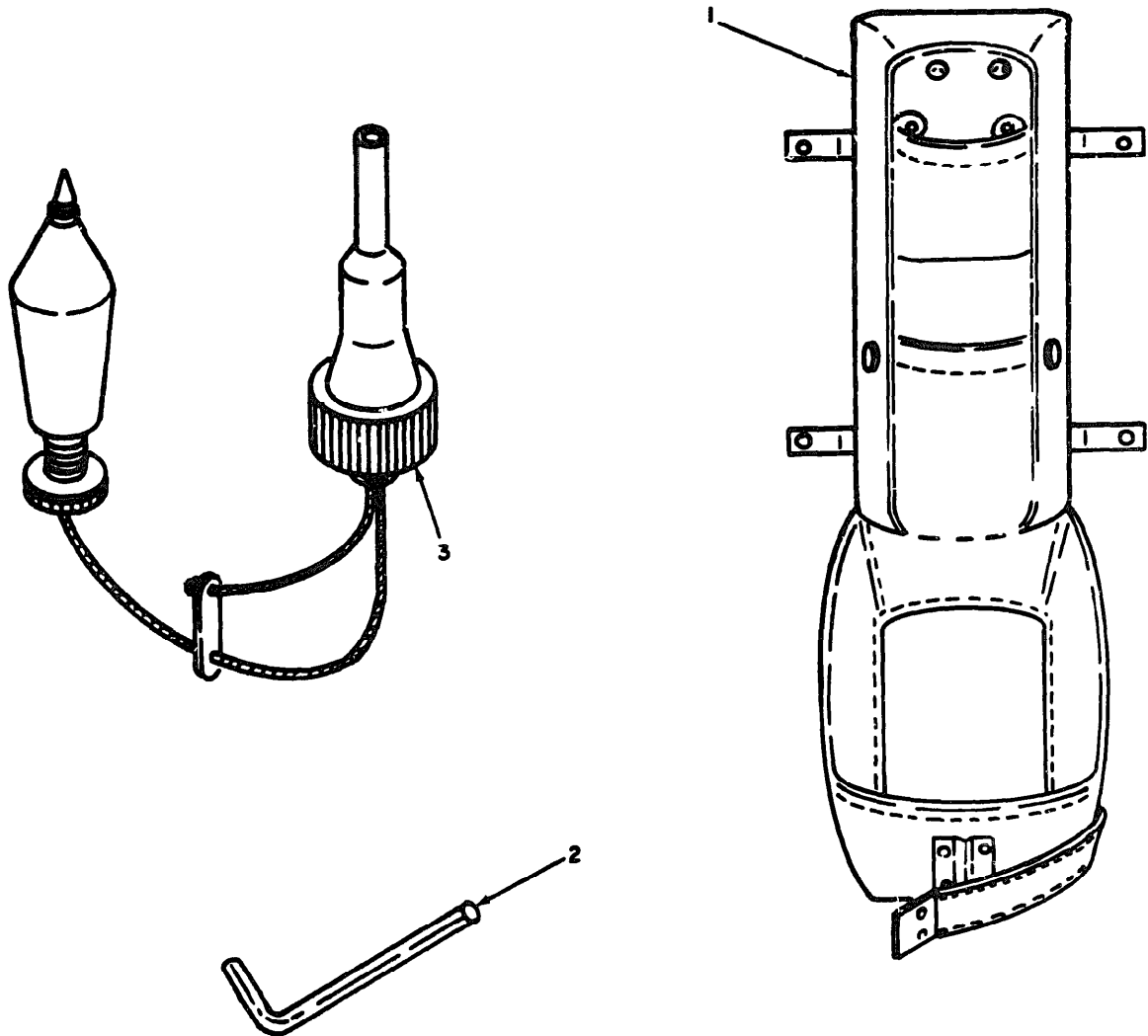




TS008857

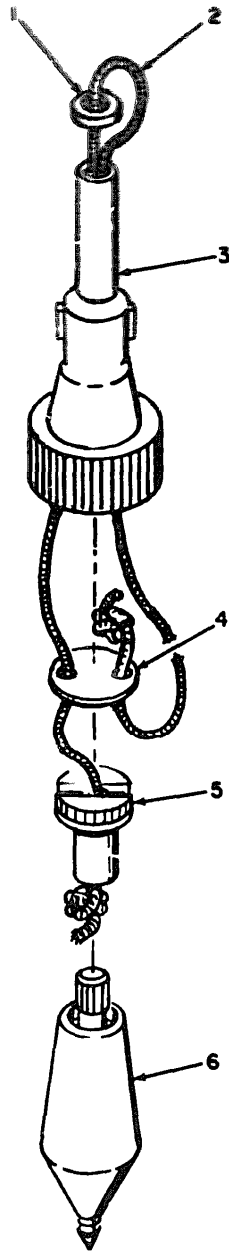
Figure 32. Diagonal Microscope Eyepiece





TS008859

Figure 34. Tripod Accessory Case



TS008860

Figure 35. Plumb Bob

Section III. SPECIAL TOOLS LIST

(1) ILLUSTRATION		(2)	(3)	(4)	(5)	(6)	(7)	(8)
(a) FIG. NO.	(b) ITEM NO.	SMRR CODE	NATIONAL STOCK NUMBER	PART NUMBER	FSCM	DESCRIPTION  Usable On Code	U/M	QTY INC IN UNIT
29	4	PAQZZ	6675-00-353-4105	409334	89905	PIN, ADJUSTING	EA	2
29	5	PAQZZ	5120-00-961-2781	188786	89905	SCREWDRIVER	EA	1
34	2	XBOZZ		166464	89905	WRENCH, TRIPOD	EA	1

Section IV. NATIONAL STOCK NUMBER AND PART NUMBER INDEX

Stock Number	Figure No.	Item No.
5120-00-446-2860	29	5
5905-00-118-4625	28	6
5995-00-957-2099	28	3
6675-00-146-1762	29	17
6675-00-253-5496	16	10
6675-00-353-4053	17	17
	17	18
6675-00-353-4103	29	4
6675-00-378-9944	15	9
6675-00-378-5952	14	11
	14	12
6675-00-375-9401	29	3
6675-00-439-8054	30	10
6675-00-714-1375	27	
6675-00-859-5936	27	2
	28	15
	30	6
6675-00-863-7471	29	9
6675-00-797-8744	20	1
6675-00-980-0118	29	2
6675-00-997-4340	27	
6675-00-997-4341	27	
7920-00-378-9524	29	6
8330-00-965-1722	29	8

Part Number	FSCH	Fig No.	Item No.	Part Number	FSCH	Fig No.	Item No.
101584	89905	27	8	107377	89905	19	38
101615	89905	27	1	107380	89905	19	23
105392	89905	27	11	107381	89905	19	40
107300	89905	7	25	107382	89905	19	41
107304	89905	7	6	107383	89905	19	27
107305	89905	7	7	107385	89905	19	32
107310	89905	8	5	107404	89905	21	6
107317	89905	9	30	107408	89905	21	9
107319	89905	9	11	107409	89905	21	21
107320	89905	9	15	107410	89905	21	22
107322	89905	9	13	107411	89905	21	17
107323	89905	9	24	107412	89905	21	25
107326	89905	9	20	107417	89905	22	2
107327	89905	9	21	107418	89905	22	1
107328	89905	9	22	107442	89905	21	10
107329	89905	9	29	108069	89905	22	6
107330	89905	10	5	108396	89905	21	24
107331	89905	10	2	109142	89905	3	8
107333	89905	10	1	109251	89905	3	9
107335	89905	10	7	109255	89905	7	2
107337	89905	10	4	109258	89905	22	7
107338	89905	10	3			32	1
107343	89905	15	1	109260	89905	32	3
107354	89905	30	9			22	4
107355	89905	30	4	109274	89905	2	1
107356	89905	30	3	109276	89905	30	10
107357	89905	30	2	109277	89905	3	4
107361	89905	12	13	109279	89905	3	6
107362	89905	12	1	109283	89905	23	4
107363	89905	19	3	109286	89905	13	27
107365	89905	19	37	109334	89905	29	4
107366	89905	19	18	109335	89905	29	6
107367	89905	19	2	112298	89905	27	18
107372	89905	19	11	112537	89905	33	8
107373	89905	19	15	112809	89905	27	6
107374	89905	19	35	114571	89905	7	8
107375	89905	19	9	119227	89905	21	19
107376	89905	19	21	122284	89905	28	13

<u>Part Number</u>	<u>FSCN</u>	<u>Fig No.</u>	<u>Item No.</u>	<u>Part Number</u>	<u>FSCN</u>	<u>Fig No.</u>	<u>Item No.</u>
122334	89905	28	20	129244	89905	9	1
122335	89905	28	19	129247	89905	12	10
122336	89905	28	1	129249	89905	12	17
122337	89905	28	3	129394	89905	25	5
122338	89905	28	29	129831	89905	5	6
122339	89905	28	27	129957	89905	12	9
122343	89905	28	16	129961	89905	12	8
122344	89905	28	18	129964	89905	12	6
122345	89905	28	22	129968	89905	11	5
122681	89905	20	6	129969	89905	11	3
122685	89905	20	2	129975	89905	24	7
122701	89905	9	12			25	10
		16	57			26	10
122714	89905	31	1	129980	89905	24	10
122717	89905	21	1			25	9
124083	89905	31	9			26	9
		32	9	129986		26	1
124084	89905	31	13	029991	89905	25	1
		32	13	129993	89905	24	5
124085	89905	31	10			25	6
		32	10			26	6
124086	89905	31	26	129995	89905	12	12
124087	89905	31	25	130002	89905	16	46
124092	89905	31	17	130004	89905	13	42
124093	89905	31	15	130009	89905	16	27
124094	89905	31	14	130083	89905	13	32
124095	89905	31	24	130087	89905	13	37
124098	89905	32	23	130089	89905	13	10
124099	89905	32	20	130090	89905	13	20
124724	89905	28	4	130091	89905	13	17
129045	89905	13	14	130094	89905	13	21
129047	89905	13	9	130097	89905	13	15
129050	89905	13	7	130099	89905	13	16
129053	89905	13	24	130100	89905	13	11
129054	89905	15	7	130373	89905	4	9
129058	89905	15	9	130378	89905	4	8
129059	89905	14	12	134253	89905	29	1
129063	89905	14	3	135247	89905	26	5
129065	89905	13	8	135794	89905	2	5
129068	89905	14	5	135796	89905	2	4
129069	89905	14	1	135797	89905	2	3
129072	89905	16	62	135901	89905	4	4
129075	89905	16	29	135959	89905	6	2
129077	89905	16	36	135960	89905	5	1
129087	89905	16	45	136001	89905	16	15
129090	89905	16	47	136002	89905	16	16
129091	89905	16	44	136003	89905	16	11
129092	89905	16	48	136043	89905	19	14
129095	89905	16	33	136046	89905	7	15
129096	89905	16	35	136061	89905	10	8
129097	89905	16	53	136063	89905	11	2
129099	89905	16	59	136064	89905	15	13
129100	89905	16	58	136067	89905	12	2
129101	89905	16	55	136075	89905	24	8
129104	89905	16	54			25	8
129114	89905	17	18	136076	89905	26	8
129116	89905	17	13	136083	89905	24	3
129117	89905	17	12			25	3
129118	89905	17	14			26	3
129119	89905	17	11	136084	89905	24	2
129120	89905	17	17			25	2
129124	89905	17	24			26	2
129125	89905	17	25	136087	89905	24	1
129126	89905	17	6	136092	89905	14	11
129133	89905	19	39	136119	89905	7	1
129142	89905	19	20	136134	89905	30	8
129158	89905	16	20	136143	89905	14	4
129159	89905	16	21	136144	89905	7	10
129164	89905	16	26	136145	89905	7	19
129166	89905	16	23				
129170	89905	16	25				

Invoice Number	Invoice No.	Invoice No.	Invoice No.	Rate Number	Rate No.	Rate No.	Rate No.
156149	89905	7	17	162908	89905	17	15
156150	89905	12	7	162913	89905	7	27
156151	89905	12	5	162935	89905	15	12
156152	89905	19	22	163306	89905	13	25
156153	89905	19	26	163606	89905	9	9
156156	89905	9	10	163635	89905	17	6
156157	89905	20	7	163654	89905	8	13
156170	89905	9	8			10	9
156175	89905	13	40	163656	89905	16	1
		15	4			32	22
156193	89905	24	4	163663	89905	7	24
149679	89905	6	13	163673	89905	23	6
153317	89905	6	5	163679	89905	16	30
153319	89905	6	8	163786	89906	9	4
153333	89905	6	4			9	28
158656-74	89905	3				22	8
161015	89905	32	8			32	2
161017	89905	27	4	163788	89905	21	2
161034	89905	6	11			21	12
161337	89905	33	36			21	15
16142	89905	27	13			31	2
		31	16	163790	89905	7	12
161780	89905	6	6	163805	89905	9	27
161784	89905	6	15	163807	89905	7	26
161860	89905	16	52			9	5
161861	89905	13	43			11	7
		14	13			11	10
		15	5			16	14
		16	43			16	19
		17	8			19	31
161863	89905	8	7	163809	89905	4	1
161909	89905	19	8			17	10
161941	89905	17	23	163812	89905	9	16
		17	26			20	14
161975	89905	5	2			25	12
161977	89905	3	1			31	19
162030	89905	17	1	163816	89905	12	16
162043	89905	11	6			15	14
162092	89905	7	5			16	41
162112	89905	13	2			26	12
162146	89905	17	27	163831	89905	22	9
162165	89905	24	6	163833	89905	8	15
		25	11	163836	89905	16	6
		26	11			16	22
162217	89905	17	19	163856	89905	5	10
162254	89905	5	4	166265	89905	9	17
162367	89905	14	9			9	18
162368	89905	7	3			15	2
		7	20	166370	89905	27	2
162437	89905	6	12			28	15
162473	89905	13	36			30	6
		15	10	166494	89905	34	2
162474	89905	9	23	166786	89905	29	5
162477	89905	3	2	166684	89905	29	8
162567	89905	4	6	166993	89905	12	11
162576	89905	13	12	167004	89905	18	7
		16	38	167226	89905	29	7
162584	89905	9	14	167292	89905	28	30
		10	6	167435	89905	27	12
162620	89905	13	19	167456	89905	28	7
162629	89905	19	13	169617	89905	8	2
162667	89905	8	9	169625	89905	33	10
162681	89905	6	3	169693	89905	21	29
162873	89905	30	1			31	6
162882	89905	7	17	170142	89905	11	8
162888	89905	16	60	170174	89905	17	20
162901	89905	16	3	170252	89905	9	31
162905	89905	16	28	170271	89905	13	29



Part Number	FSCN	Fig No.	Item No.	Part Number	FSCN	Fig No.	Item No.
170276	89905	17	7	187902	89905	20	7
170383	89905	32	24	188760	89905	21	16
170545	89905	12	20	188790	89905	28	10
		19	17	188258	89905	21	18
		32	16	189189	89905	28	11
170550	89905	9	2	193056	89905	27	17
		14	14	193179	89905	27	20
		16	34			27	21
		19	12	193248	89905	28	5
		20	4	193801	89905	27	22
		31	27	193807	89905	27	19
		32	15	193808	89905	28	6
		32	28	193848	89905	27	23
170554	89905	7	9	194609	89905	9	19
		16	61	195691	89905	20	
170559	89905	13	4	195735	89905	32	
		20	12	195899	89905	31	
170576	89905	31	18	195900	89905	21	
170844	89905	9	33	195994	89905	9	
170881	89905	16	37	196329	89905	27	1
170897	89905	16	13	197550	89905	16	56
170905	89905	8	14	197872	89905	2	6
170908	89905	6	9	198386	89905	28	9
170920	89905	28	12	198387	89905	22	23
170972	89905	13	38	198388	89905	28	2
171144	89905	19	7	198389	89905	28	17
171274	89905	6	17	198390	89905	28	24
		32	19	200409	89905	32	25
171280	89905	16	17	200455	89905	21	26
171289	89905	21	7			31	3
171394	89905	19	1	200456	89905	21	27
171398	89905	13	31			31	8
		13	41	200439	89905	21	20
171407	89905	12	23			31	1
171481	89905	16	4	200460	89905	21	30
171578	89905	16	50			31	5
171670	89905	19	25		89905	20	9
171671	89905	19	36		89905	22	6
171916	89905	16	10			32	5
171924	89905	7	13	202573	89905	1	2
175232	89905	7	22	202606	89905	16	12
		8	11	202610	89905	22	5
		12	21			32	4
		16	7	202612	89905	20	10
		31	23	202613	89905	20	8
175250	89905	17	5	202615	89905	21	8
175371	89905	18	6	202616	89905	21	
175881	89905	12	4	202619	89905	21	5
176032	89905	27	9	202620	89905	21	3
176037	89905	27	7	202683	89905	6	
176063	89905	28	8	202709	89905	15	8
176077	89905	14	8	202716	89905	15	11
176091	89905	17	22	202718	89905	9	25
176171	89905	13	28			9	26
176213	89905	31	21	202749	89905	20	11
176324	89905	13	22	202755	89905	19	24
176407	89905	12	3	208818	89905	33	26
176466	89905	3	7	212163	89905	28	31
176732	89905	8	4	212165	89905	28	28
177189	89905	27	5	212177	89905	13	5
177721	89905	19	33	212178	89905	13	3
177733	89905	11	1	212710	89905	23	2
177745	89905	16	24	212711	89905	13	3
177749	89905	15	15	214203	89905		14
177751	89905	21	11	214254	89905		
177752	89905	17	4	214260	89905	7	16
179120	89905	13	25	214372	89905	18	5
187900	89905	20	5	215a103	89905	27	15

Figure Number	FEC#	FEC No.	Exam No.	Figure Number	FEC#	FEC No.	Exam No.
215105	89905	27	3	305117	89905	13	26
215142	89905	27	23	305119	89905	13	13
215823	89905	5	7	305161	89905	19	5
215824	89905	5	8	305163	89905	19	10
215825	89905	5	9	305164	89905	19	19
215899	89905	27	20	305166	89905	12	22
215973	89905	8	13	305169	89905	16	31
221167	89905	28	26	301432	89905	28	14
234018	89905	20	13	310439	89905	28	21
234075	89905	6	16	310443	89905	28	
234548	89905	32	17	311133	89905	5	5
235975	89905	33	31	311718	89905	28	25
235978	89905	33	18	311846	89905	29	2
		33	23	311850	89905	20	1
236263	89905	9	7	311858	89905	23	5
242587	89905	16		311859	89905	23	1
242588	89905	12		311862	89905	14	2
242589	89905	12		311975	89905	16	63
242641	89905	16		311978	89905	18	2
242642	89905	16		311979	89905	18	4
242643	89905	25		311980	89905	18	1
242644	89905	26		312946	89905	33	6
242645	89905	24		312964	89905	4	2
242647	89905	16		312994	89905	33	
242648	89905	17				34	
242650	89905	10				35	
242651	89905	22		314511	89905	7	
242658-74	89905	12		314512	89905	7	
242660	89905	9		314513	89905	4	
242566	89905	13		314514	89905	4	
242689	89905	15				5	
243104	89905	16	51	314515	89905	5	
246376	89905	15	6	314517	89905	6	
246416	89905	27		314519	89905	4	
252065	89905	16	64			5	
252888	89905	6	10			6	
258785	89905	21	31			7	
		31	4	314520	89905	7	18
258794	89905	31	12	314521	89905	7	4
		32	12	314522	89905	4	3
258795	89905	31	11	314526	89905	5	
		32	11	314527	89905	5	3
258813	89905	31		314528	89905	7	23
		32		314529	89905	6	14
258814	89905	31		314565	89905	14	10
		32		314566	89905	17	3
265535	89905	33	30	314567	89905	17	2
268034	89905	27		314568	89905	17	
269587	89905	35	1	314569	89905	17	9
271975	89905	8	6	314570	89905	17	16
271990	89905	33	7	314572	89905	22	3
271991	89905	33	3	314574	89905	9	34
271993	89905	33	25	314575	89905	9	32
272091	89905	33	15	314576	89905	11	4
274830	89905	31		314577	89905	11	9
278150	89905	6	7	314578	89905	8	12
284791	89905	33	35	314579	89905	8	8
284836	89905	29	3	314580	89905	8	1
288583	89905	13	6	314581	89905	9	6
296630	89905	35	2	315010	89905	33	20
296670	89905	35	5	315061	89905	14	7
296672	89905	35	6	316026	89905	14	6
305093	89905	25	4	316027	89905	9	3
		26	4	316028	89905	15	3
305094	89905	24	9	316030	89905	16	
		25	7	316031	89905	16	2
305C	89905	26	7	316032	89905	16	49
3050	89905	24	11	316033	89905	16	9

<u>Part</u> <u>Number</u>	<u>FSCN</u>	<u>Fig</u> <u>No.</u>	<u>Item</u> <u>No.</u>	<u>Part</u> <u>Number</u>	<u>FSCN</u>	<u>Fig</u> <u>No.</u>	<u>Item</u> <u>No.</u>
316035	89905	16	8	323375	89905	33	17
316032	89905	16	5	325796	89905	13	33
316038	89905	8	3	328481	89905	13	35
316039	89905	17	21	329355	89905	19	29
316040	89905	21	14	329359	89905	19	28
316041	89905	13	18	329367	89905	13	1
316055	89905	2		329591	89905	12	15
316059	89905	1	3			16	42
316083	89905	3	5	332336	89905	16	39
316106	89905	29	9	332337	89905	12	19
316107	89905	30	5	335104	89905	6	1
316110	89905	1	1	335235	89905	19	16
316114	89905	7		335524	89905	4	5
316119	89905	2		335569	89905	20	3
		3		335608	89905	19	4
317076	89905	27	13	343590	89905	16	18
317080	89905	27	4	346285	89905	33	34
31901c	89905	34	3	346286	89905	33	9
319012	89905	33	2	348451	89905	13	34
319014	89905	33	5	348467	89905	16	40
319016	89905	33	22	350956	89905	33	27
319019	89905	33	4	352825	89905	35	3
319023	89905	33	32	352916	89905	35	4
319025	89905	33	13	356048	89905	4	7
319028	89905	33	12	356049	89905	19	34
319031	89905	33	33	356050	89905	19	30
319034	89905	33	21	358200	89905	12	18
319035	89905	33	24	360470	89905	13	
319040	89905	33	29	360471	89905	14	
319042	89905	33	28	360472	89905	17	
319047	89905	33	19	360473	89905	23	
319062	89905	33	1	360474	89905	14	
319087	89905	33	16	360475	89905	17	
319095	89905	12	14	360476	89905	22	
319096	89905	16	32	360477	89905	22	
319164	89905	34	1	360478-74	89905	16	
322423	89905	31	28	360479	89905	9	
322424	89905	31	20	360480	89905	11	
322425	89905	31	22	360482	89905	8	
322430	89905	32		360483	89905	8	
322434	89905	32	14	360484	89905	9	
322437	89905	32	18	360487	89905	15	
322447	89905	32	7	360489	89905	16	
322440	89905	32	21	360491-74	89905	8	
322452	89905	32	26			9	
322455	89905	32	27			10	
322592	89905	18				11	
322595	89905	13				12	
323108	89905	29		360492-74	89905	13	
323109	89905	13	39	360493	89905	16	
323110	89905	2	2	360496-74	89905	16	
323133	89905	29	10	361106	89905	33	14
323134	89905	29	11	363901	89905	19	
323155	89905	18	9	363902	89905	19	
323156	89905	18	3	363903	89905	21	
323172	89905	33	11	363905-74	89905	21	
323221	89905	13	30	363906	89905	21	
323249	89905	18	8	800206	89905	27	10
323317	89905	12		800860	89905	27	16

By Order of the Secretary of the Army

Official:

VERNE L. BOWERS

*Major General, United States Army,  
The Adjutant General*

FRED C. WEYAND  
*General, United States Army,  
Chief of Staff*

Distribution

To be distributed in accordance with DA Form 12-25A (qty rqr block no. 174)  
Organizational Maintenance Requirements for Surveying Equipment.



# SOMETHING WRONG WITH THIS MANUAL?

THEN... JOT DOWN THE DOPE ABOUT IT ON THIS FORM, TEAR IT OUT, FOLD IT AND DROP IT IN THE MAIL!

FROM: (YOUR UNIT'S COMPLETE ADDRESS)

PFC JOHN DOE  
CoA, 3<sup>rd</sup> ENGINEER BN  
FT. LEONARD WOOD MD 63108

DATE 16 DEC 74

PUBLICATION NUMBER

TM5-6115-200-20 AND P

DATE

1 APR 72

TITLE

GENERATOR SET 10 KW  
NSN 6115-00-231-7286

BE EXACT... PIN-POINT WHERE IT IS

IN THIS SPACE TELL WHAT IS WRONG AND WHAT SHOULD BE DONE ABOUT IT:

PAGE NO.	PARA-GRAPH	FIGURE NO.	TABLE NO.
6	2-1 a		
81		4-3	
125	line 20		

In line 6 of paragraph 2-1a the manual states the engine has 6 cylinders. The engine on my set only has 4 cylinders. Change the manual to show 4 cylinders.

Callout <sup>D</sup> on figure 4-3 is pointing at a <sup>M</sup> bolt. In the key to fig. 4-3, item 16 is called a <sup>S</sup> shim. Please correct one or the other.

I ordered a gasket, item 19 on figure B-16 by NSN 2910-00-762-3001. I got a gasket but it doesn't fit. Supply says I got what I ordered so the NSN is wrong. Please give me a good NSN.

TYPED NAME, GRADE OR TITLE, AND TELEPHONE NUMBER

JOHN DOE, PFC (268) 317-7111

SIGN HERE

John Doe

FILL IN YOUR  
UNIT'S ADDRESS

FOLD BACK

DEPARTMENT OF THE ARMY

POSTAGE AND FEES PAID  
DEPARTMENT OF THE ARMY  
DOD-314

OFFICIAL BUSINESS

PENALTY FOR PRIVATE USE, \$300

Commander  
U.S. Army Troop Support Command  
ATTN: AMSTS-MPP  
4300 Goodfellow Boulevard  
St. Louis, Missouri 63120

FOLD BACK



FILL IN YOUR  
UNIT'S ADDRESS

FOLD BACK

DEPARTMENT OF THE ARMY

POSTAGE AND FEES PAID  
DEPARTMENT OF THE ARMY  
DOD-314

OFFICIAL BUSINESS

PENALTY FOR PRIVATE USE, \$300

Commander  
U.S. Army Troop Support Command  
ATTN: AMSTS-MPP  
4300 Goodfellow Boulevard  
St. Louis, Missouri 63120

FOLD BACK





FILL IN YOUR  
UNIT'S ADDRESS

FOLD BACK

DEPARTMENT OF THE ARMY

POSTAGE AND FEES PAID  
DEPARTMENT OF THE ARMY  
DDG-314

OFFICIAL BUSINESS

PENALTY FOR PRIVATE USE, \$300

Commander  
U.S. Army Troop Support Command  
ATTN: AMSTS-MPP  
4300 Goodfellow Boulevard  
St. Louis, Missouri 63120

FOLD BACK

**END**

8-10-83

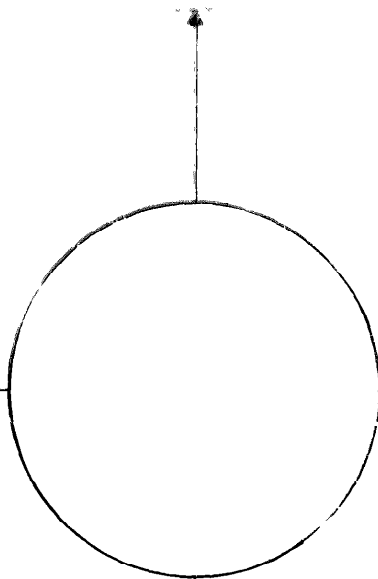
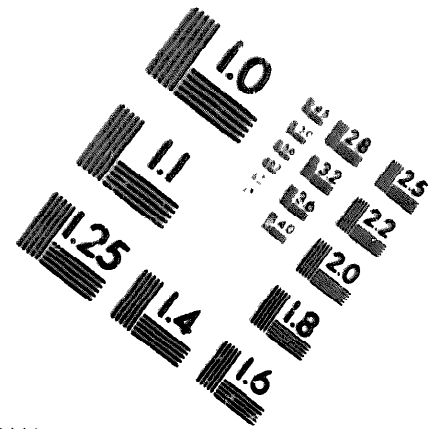
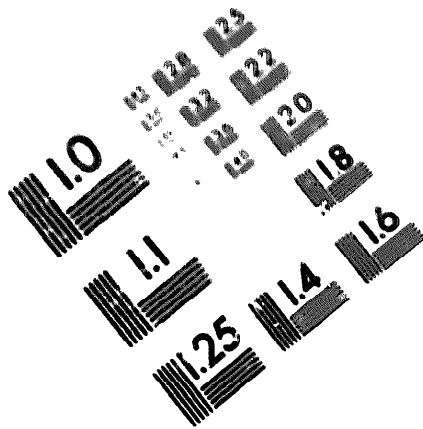
**DATE**





DEPARTMENT OF THE ARMY

MICROFORM  
TEST TARGET



150 MM

10 mm (e= 81 mm)

ABCDEFGHIJKLMNQRSTUWXYZ1234567890  
abcdefghijklmnopqrstuvwxyz\$%&'%# 1/2 1/4 3/4 —=+ x&@\*

15 mm (e= 109 mm)

ABCDEFGHIJKLMNQRSTUWXYZ1234567890  
abcdefghijklmnopqrstuvwxyz\$%&'%# 1/2 1/4 3/4 —=+ x&@\*

20 mm (e= 137 mm)

ABCDEFGHIJKLMNQRSTUWXYZ  
abcdefghijklmnopqrstuvwxyz  
1234567890\$%&'%# 1/2 1/4 3/4 —=+ x&@\*

25 mm (e= 177 mm)

ABCDEFGHIJKLMNQRSTUWXYZ  
abcdefghijklmnopqrstuvwxyz  
1234567890\$%&'%# 1/2 1/4 3/4 —=+ x&@\*

10 mm (e= 81 mm)

ABCDEFGHIJKLMNQRSTUWXYZ1234567890  
abcdefghijklmnopqrstuvwxyz\$%&'%# 1/2 1/4 3/4 —=+ x&@\*

15 mm (e= 109 mm)

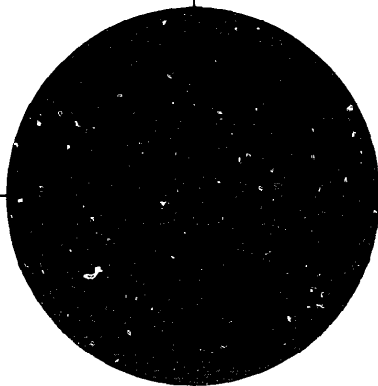
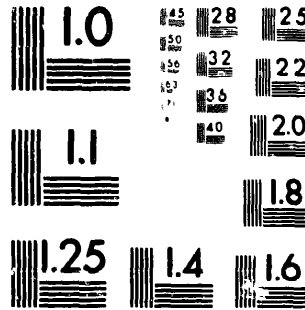
ABCDEFGHIJKLMNQRSTUWXYZ1234567890  
abcdefghijklmnopqrstuvwxyz\$%&'%# 1/2 1/4 3/4 —=+ x&@\*

20 mm (e= 137 mm)

ABCDEFGHIJKLMNQRSTUWXYZ  
abcdefghijklmnopqrstuvwxyz  
1234567890\$%&'%# 1/2 1/4 3/4 —=+ x&@\*

25 mm (e= 177 mm)

ABCDEFGHIJKLMNQRSTUWXYZ  
abcdefghijklmnopqrstuvwxyz  
1234567890\$%&'%# 1/2 1/4 3/4 —=+ x&@\*



200 MM

250 MM

